



ADDENDUM NO. 2

DATE: April 10, 2024

TO: ALL PROSPECTIVE BIDDERS

SUBJECT: Solicitation No. AA018B

TITLE: Miami International Airport (MIA) South Terminal Concourse H Rehabilitation – Phase 1

This Addendum becomes a part of the subject solicitation.

A. The Solicitation End Date is April 22, 2024, 2:00 PM Local Time.

B. **REVISIONS:**

1. ADVERTISEMENT FOR BIDS

~~4. LICENSING REQUIREMENTS~~

~~A Bidder must hold at the time its bid is submitted:~~

~~A. ——— A current valid certificate, as listed below, qualifying the Bidder to perform the Work contemplated by these Contract Documents. Failure to hold the appropriate certificate at the time this Bid is submitted shall render the Bid non-responsive.~~

~~1) The State of Florida Construction Industry Licensing Board, pursuant to the provisions of Section 489.115 of the Florida Statutes; or~~

~~2) The Miami-Dade County Construction Trades Qualifying Board, pursuant to the provisions of Section 10-3 (a) of the Miami-Dade County Code. Holders of Miami-Dade County Certificates of Competency must also hold Certificates of Registration issued by the State of Florida Construction Industry Licensing Board, pursuant to the provisions of Section 489.117, Florida Statutes.~~

~~B. ——— If a Bidder is a joint venture, the joint venture entity, of whatever nature or qualifications, must be qualified as a separate and distinct entity, as required by the rules of the State of Florida Department of Business & Professional Regulations (DBPR). Joint Venture Bidders not otherwise qualified as set forth above, may submit Qualifications if they have initiated the process with the Florida Construction Industry Licensing Board and have received a letter from the Department of Business & Professional Regulations (DBPR) attesting that they have satisfied the requirements of DBPR pertaining to the Qualifications of Joint Ventures. Such letters must be submitted with the Bid.~~

4. LICENSING REQUIREMENTS - REVISED

A Bidder must hold at the time its bid is submitted:

A. A General Contractor License is required.



1) The State of Florida Construction Industry Licensing Board, pursuant to the provisions of Section 489.115 of the Florida Statutes; or

2) The Miami-Dade County Construction Trades Qualifying Board, pursuant to the provisions of Section 10-3 (a) of the Miami-Dade County Code. Holders of Miami-Dade County Certificates of Competency must also hold Certificates of Registration issued by the State of Florida Construction Industry Licensing Board, pursuant to the provisions of Section 489.117, Florida Statutes.

B. If a Bidder is a joint venture, the joint venture entity, of whatever nature or qualifications, must be qualified as a separate and distinct entity, as required by the rules of the State of Florida Department of Business & Professional Regulations (DBPR). Joint Venture Bidders not otherwise qualified as set forth above, may submit Qualifications if they have initiated the process with the Florida Construction Industry Licensing Board and have received a letter from the Department of Business & Professional Regulations (DBPR) attesting that they have satisfied the requirements of DBPR pertaining to the Qualifications of Joint Ventures. Such letters must be submitted with the Bid.

Failure to comply with the provisions of this Article at the time this bid is submitted, shall render the Bid non-responsive.

C. DRAWINGS – REFER TO ADDENDUM 2, ATTACHMENT 1

a. Drawing G0.02 Scope #2 - Remove the following in its entirety:

REMOVE AND REPLACE THE FAILED WINDOW WALL DOWN TO THE EXISTING STRUCTURE AND REPLACE WITH FAOUR GLASS TECHNOLOGIES SERIES 'SLIMPACT XL' IMPACT RATED WINDOW WALL SYSTEM (L.M.I.) OR APPROVED EQUAL. GATE H3.

b. Drawing G0.02 Scope #2 - Replace with the following:

REMOVE AND REPLACE THE FAILED WINDOW WALL DOWN TO THE EXISTING STRUCTURE AND REPLACE WITH ALDORA ALUMINUM & GLASS PRODUCTS SERIES SMI-175 ALUMINUM WINDOW WALL SYSTEM OR APPROVED EQUAL. GATE H3.

c. DRAWINGS S1.01 THROUGH S1.07 - Added section mark 2/S1.07 in work zones WZ-4, WZ-6/8, WZ-10 (DRAWING S1.07) Added section 2/s1-07, added details E/S1.07, F/S1.07, G/S1.07, H/S1.07

D. PROJECT MANUAL – REFER TO ADDENDUM 2, ATTACHMENT 2

a. DIVISION 08 – OPENINGS: 08 44 12 - Metal-Framed Window Wall System

Remove the following in its entirety:



- A. Series “Slimpack XL” SSG Glass Wall System as manufactured by Faour Glass Technologies. or approved equal.

Replace with the following:

- A. Series “SMI-175” Aluminum Window Wall System as manufactured by Aldora Aluminum & Glass Products, Inc. or approved equal.

QUESTIONS & ANSWERS

Question No.1 What is the equipment warranty?

Answer No.1 Refer to Attachment 2, Article 7, Section M.

Question No.2 Staging and storage area for the project—Is there a staging/storage area for the construction company? If so, where is it?

Answer No.2 The staging area is to be determined/coordinated at the time of construction.

Question No.3 NTP date – How long will the Department take from Award to NTP?

Answer No.3 30-45 days after the project award.

Question No.4 Shutdown time, transition time per gate – Will there be a shutdown period where the construction company is transitioning from one to another, where the 786 days won’t count against the construction company?

Answer No.4 No additional time.

Question No.5 Contingency Time—Contingency allocation has been added to the budget for this contract. Is the Department allowing “Contingency Time”?

Answer No.5 There is no contingency for time.

Question No.6 We understand that some of the curtain walls to be replaced need to be fire rated and some non-fire rated. The specified curtain wall manufacturer, Saffitfirst, only provides fire rated curtain walls.

Answer No.6 Fire rated curtain walls are to be installed for Gates H4, H6, H8, & H10. Non-fire rated curtain wall system to be installed for Gate H3.

Question No.7 Are we allowed to install Faour Glass Technologies for non-fire rated and Saffitfirst for fire rated curtain walls. We are asking if we can mix the two products on this project.

Answer No.7 Faour Glass Tecnologies to be removed from the project contract documents. Metal-framed window wall system basis of design manufacturers are as follows:



- For Gate H3 - 'Series SMI-175 Aluminum Window Wall System – L.M.I.' by Aldora Aluminum and Glass Products Inc., FL NOA# 19973-R6 or approved equal.
- For Gates H4, H6, H8, & H10 – 'GPX Fire Rated Window Wall System' by SaftiFirst, Inc., FL NOA# 16382.1 or approved equal.

Question No.8 Can a state licensed civil engineer bid on this project.

Answer No.8 Refer to Revision B, 4. LICENSING REQUIREMENTS - REVISED.

Question No.9 Please let us know if the Owner will pay for stored material. This is very important for us as the material is very expensive and needs to be paid 100% upon delivery.

Answer No.9 No. The bidder shall account for any storage fees in their bid price.

Question No.10 Aside from the two manufacturers Saftifirst and Faour Glass Technologies, also Tecnoglass Inc. is mentioned in the spec book as basis of design. If we are to use this manufacturer as well please provide a Miami Dade County Product approval number(s).

Answer No.10 Reference to Tecnoglass Inc. used as the basis of design for Glazing. Refer to Answer No. 7.

Question No.11 It appears there is a discrepancy between the drawings and the project specifications regarding the project exterior glazing system. The drawing plans, sections and elevations indicate Aldora Aluminum and Glass Products, Inc. or equivalent Aluminum/Glass window wall or curtain wall system (where not fire rated). The specifications note Faour Glass Technologies Slimpack system or equivalent alternative; however, this system is an all-glass system with no known alternative in the market – this would be deemed as a sole source specification. Please advise if it is the owner's intent to disregard the plans, elevations and provide a sole source product solution from this single vendor, or to competitively bid the project with aluminum / glass systems which meet the project performance criteria.

Answer No.11 Refer to Answer No. 7.

Question No.12 Please provide a clear delineation of the extent of the exterior Safti-First Fire Rated Window Wall System. It does not appear to be noted specifically while the section is shown on sheet A-7.

Answer No.12 Refer to Scope of Work Sheet G0.02 and Answer No. 7 for proposed window wall systems and their associated Gates. Elevations drawing Sheet A-7, notes "Proposed Glazing Vertical Section – East Side / Series GPX Fire Rated Window System" and "Proposed Glazing Vertical Section – West Side / Series "SMI-175" Aluminum Window Wall System - Aldora Aluminum & Glass Products, Inc."

Question No.13 The specified Saft-First Fire Rated Window Wall System is limited to a maximum 12'-0" (144") height, not 12'-6" (150") as shown on elevations. The system has a max mullion



spacing of and a 72" OC (not 96" as shown on elevations). This maximum height and width will yield an allowable wind pressure of 46.9 PSF. A height of 144" and mullion spacing of 48" OC yields a maximum allowable wind pressure of 70.4 psf. Please provide direction on the desired height and mullion spacing to yield an architecturally acceptable elevation with the specified Saft-First Fire Rated Window Wall System.

Answer No.13 A height of 144" and mullion spacing of 48" center to center is acceptable. The height of the wall system shall be no more than 144". Curbs to be installed and split evenly between the top and bottom of the opening to fill the 6" excess. Opening to be field verified by the contractor prior to construction.

Question No.14 What is the expectation in regard to the temporary wall construction. Should this wall be engineered by the contractor and costs associated to be included in Bid? If so, all contractors bidding should have the same guidelines to price accordingly and we believe this direction should be given by the AOR.

Answer No.14 Yes, refer to drawings G1.01 through G1.07 and A-2. MDAD has specific requirements for the temporary wall. Refer to Section 1/G1.07, "Temporary demising wall as designed by the contractor. The wall shall be designed to resist wind loads I.A.W. FBC and ASCE7. Contractor shall submit shop drawings signed and sealed by a Florida Registered Professional Engineer. Refer to Arch. Plans Dwg. A-2 for wall openings."

Question No.15 It seems that the gate check-in counters will be obstructed by or located behind the temporary wall, it's critical to find a solution that allows the gate to remain open as mentioned in the pre bid walkthrough while still accommodating the construction needs. Please advise expectation.

Answer No.15 Refer to the Construction Phasing notes provided on G1.01 through G1.07. Gate to Jet Bridge and Attendant work areas to remain fully functional, if relocation and/or temporary counters will be required, contractor to coordinate with Airline and Terminal Operations.

Question No.16 Please confirm the gates H4, H6, H8, H10 and H3 are the only gates in this project.

Answer No.16 Confirmed, as noted in the scope of work.

Question No.17 Is there an asbestos survey we can have a copy of? Can MDAD include an asbestos allowance to the bid please?

Answer No.17 No, there is no survey available at this time. Any asbestos work will be case by case bases and will paid under the Contingency Allowance.

Question No.18 We understand that the RFI deadline has passed, however, the manufacturer specified will not price the product as they explained below. Their standard products do not fit the design intent. Also it seems Aldora product was used in the details provided which does not match their products. This is the only manufacturer specified for this scope of work and so we need a revised design to be able to get prices from Faour Glass



Technologies. They told us 305 Consulting is now aware of this design issue as they had a conversation with them.

Answer No.18 Refer to Answer No. 7.

Question No.19 The project drawings and specifications are in conflict in relation to approved curtainwall / window wall system manufacturers. Please confirm that manufacturers YKK and Kawneer are acceptable manufacturers for use on the project.

Answer No.19 Refer to Answer No. 7.

Question No. 20 Please provide the desired aluminum metal finish for all curtain wall / window wall systems – none is specified.

Answer No. 20 Refer to Revision D.

Question No. 21 Please provide the desired glass makeup, color, and performance requirements for the project – none are specified.

Answer No. 21 Refer to Revision C.

All other information remains the same.

Miami-Dade County,

Claudia Portocarrero
Aviation Senior Procurement Contracting Officer

c: Clerk of the Board

ADDENDUM No. 2

ATTACHMENT 1

Drawings - REVISED

SOUTH TERMINAL CONCOURSE H REHABILITATION - PHASE 1

CONTRACT NO. AA018B

DRAWINGS

DRAWING INFORMATION		ISSUE DATE / REVISIONS									
SHEET No.	DESCRIPTION	30% SUBMITTAL / APRIL 30, 2024	75% SUBMITTAL / JULY 9, 2021	100% SUBMITTAL / OCT. 11, 2021	BACK-CHECK / MAR. 28, 2022	PERMIT DRY RUN / FEB. 4, 2022	REV. 1 SUBMITTAL / MAR. 8, 2022	REV. 2 SUBMITTAL / MAY 6, 2022	BIDDING / NOV. 8, 2023	PRE-CONSTRUCTION	CONSTRUCTION
GENERAL											
G0.01	COVER SHEET	■	■	■	■	■	■	■	■	■	■
G0.02	INDEX AND PROJECT INFORMATION	■	■	■	■	■	■	■	■	■	■
G0.03	GENERAL NOTES AND APPLICABLE CODES	■	■	■	■	■	■	■	■	■	■
PHASING											
G1.01	PHASING PLAN, SECOND FLOOR - PHASE 1 & 2	■	■	■	■	■	■	■	■	■	■
G1.02	PHASING PLAN, SECOND FLOOR - PHASE 3	■	■	■	■	■	■	■	■	■	■
G1.03	PHASING PLAN, SECOND FLOOR - PHASE 4	■	■	■	■	■	■	■	■	■	■
G1.04	PHASING PLAN, THIRD FLOOR - PHASE 1 & 2	■	■	■	■	■	■	■	■	■	■
G1.05	PHASING PLAN, THIRD FLOOR - PHASE 3	■	■	■	■	■	■	■	■	■	■
G1.06	PHASING PLAN, THIRD FLOOR - PHASE 4	■	■	■	■	■	■	■	■	■	■
G1.07	SECTION / DEMISING WALL	■	■	■	■	■	■	■	■	■	■
DEMOLITION											
D0.01	GENERAL DEMOLITION NOTES	■	■	■	■	■	■	■	■	■	■
D1.01	DEMO PLAN, SECOND FLOOR - PHASE 1 & 2	■	■	■	■	■	■	■	■	■	■
D1.02	DEMO PLAN, SECOND FLOOR - PHASE 3	■	■	■	■	■	■	■	■	■	■
D1.03	DEMO PLAN, SECOND FLOOR - PHASE 4	■	■	■	■	■	■	■	■	■	■
D1.04	DEMO PLAN, THIRD FLOOR - PHASE 1 & 2	■	■	■	■	■	■	■	■	■	■
D1.05	DEMO PLAN, THIRD FLOOR - PHASE 3	■	■	■	■	■	■	■	■	■	■
D1.06	DEMO PLAN, THIRD FLOOR - PHASE 4	■	■	■	■	■	■	■	■	■	■
ARCHITECTURAL											
A-1	REFERENCED EXISTING LIFE SAFETY PLAN	■	■	■	■	■	■	■	■	■	■
A-2	DEMOLITION PLAN	■	■	■	■	■	■	■	■	■	■
A-3	FLOOR PLANS	■	■	■	■	■	■	■	■	■	■
A-4	SECOND & THIRD FLOOR, PHASE 1 & 2	■	■	■	■	■	■	■	■	■	■
A-5	SECOND & THIRD FLOOR, PHASE 3	■	■	■	■	■	■	■	■	■	■
A-6	SECOND & THIRD FLOOR, PHASE 4	■	■	■	■	■	■	■	■	■	■
A-7	ELEVATIONS	■	■	■	■	■	■	■	■	■	■
A-8	SECTIONS	■	■	■	■	■	■	■	■	■	■
STRUCTURAL											
S0.01	STRUCTURAL NOTES	■	■	■	■	■	■	■	■	■	■
S1.01	FRAMING PLAN, SECOND FLOOR - PHASE 1 & 2	■	■	■	■	■	■	■	■	■	■
S1.02	FRAMING PLAN, SECOND FLOOR - PHASE 3	■	■	■	■	■	■	■	■	■	■
S1.03	FRAMING PLAN, SECOND FLOOR - PHASE 4	■	■	■	■	■	■	■	■	■	■
S1.04	FRAMING PLAN, THIRD FLOOR - PHASE 1 & 2	■	■	■	■	■	■	■	■	■	■
S1.05	FRAMING PLAN, THIRD FLOOR - PHASE 3	■	■	■	■	■	■	■	■	■	■
S1.06	FRAMING PLAN, THIRD FLOOR - PHASE 4	■	■	■	■	■	■	■	■	■	■
S1.07	SECTION AND DETAILS	■	■	■	■	■	■	■	■	■	■
S1.08	EAST ELEVATION - PHASE 2 & 3	■	■	■	■	■	■	■	■	■	■
S1.09	EAST ELEVATION - PHASE 4	■	■	■	■	■	■	■	■	■	■
S1.10	WEST ELEVATION - PHASE 1	■	■	■	■	■	■	■	■	■	■
S1.11	WEST ELEVATION	■	■	■	■	■	■	■	■	■	■
MAINTENANCE OF TRAFFIC											
MOT1.00	MOT PLAN	■	■	■	■	■	■	■	■	■	■
MOT1.01	MOT PLAN - PHASE 1 & 2	■	■	■	■	■	■	■	■	■	■
MOT1.02	MOT PLAN - PHASE 3 & 4	■	■	■	■	■	■	■	■	■	■
MOT1.03	MOT PLAN - TYPICAL DETAILS	■	■	■	■	■	■	■	■	■	■
LIFE SAFETY PLAN											
A-6	REFERENCED LIFE SAFETY PLAN	■	■	■	■	■	■	■	■	■	■

1 DRAWING INDEX
SCALE: N.T.S.

PROJECT MANAGER: ABEL A. OPORTO, PE, ENGINEER 3
(305) 869-3876

A/E PROJECT MANAGER: ENRIQUE M. ZÚÑIGA

305 CONSULTING ENGINEERS LLC
ENGINEERS + PLANNERS
STRUCTURAL ENGINEERS
305 CONSULTING ENGINEERS, LLC
13944 SW 8 STREET, SUITE 211
MIAMI, FL 33184
PHONE: (788) 409-5548 FAX: (786) 409-3688
ENRIQUE M. ZUNIGA, P.E.
FL LICENSE NO. 38883
FL CA NO. 30247

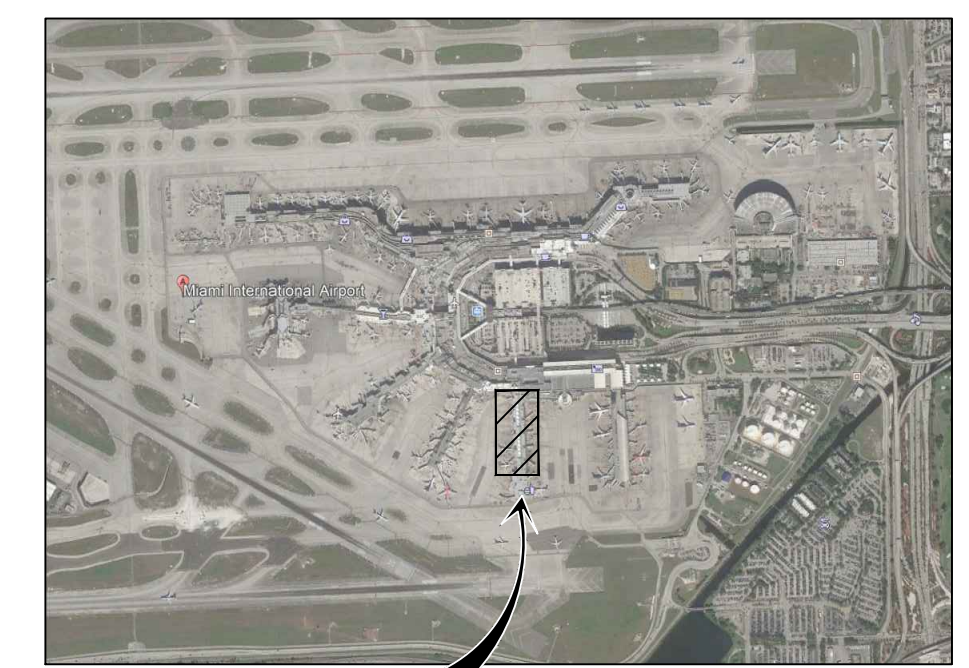
BL + A ARCHITECTS
BEN LOPEZ & ASSOCIATES, PA
(BL & A ARCHITECTS)
340 MINORCA AVENUE, SUITE 9
CORAL GABLES, FL 33134
PHONE: (305) 445-1030
BEN LOPEZ, P.A.
FL LICENSE NO. AR00055776

H. RODRIGUEZ CONSULTING ENGINEERING, INC.
7791 NW 46 STREET, SUITE 408
DORAL, FL 33166
PHONE: (305) 450-9555
HECTOR RODRIGUEZ, P.E.
FL LICENSE NO. 30729
FL CA NO. 68362

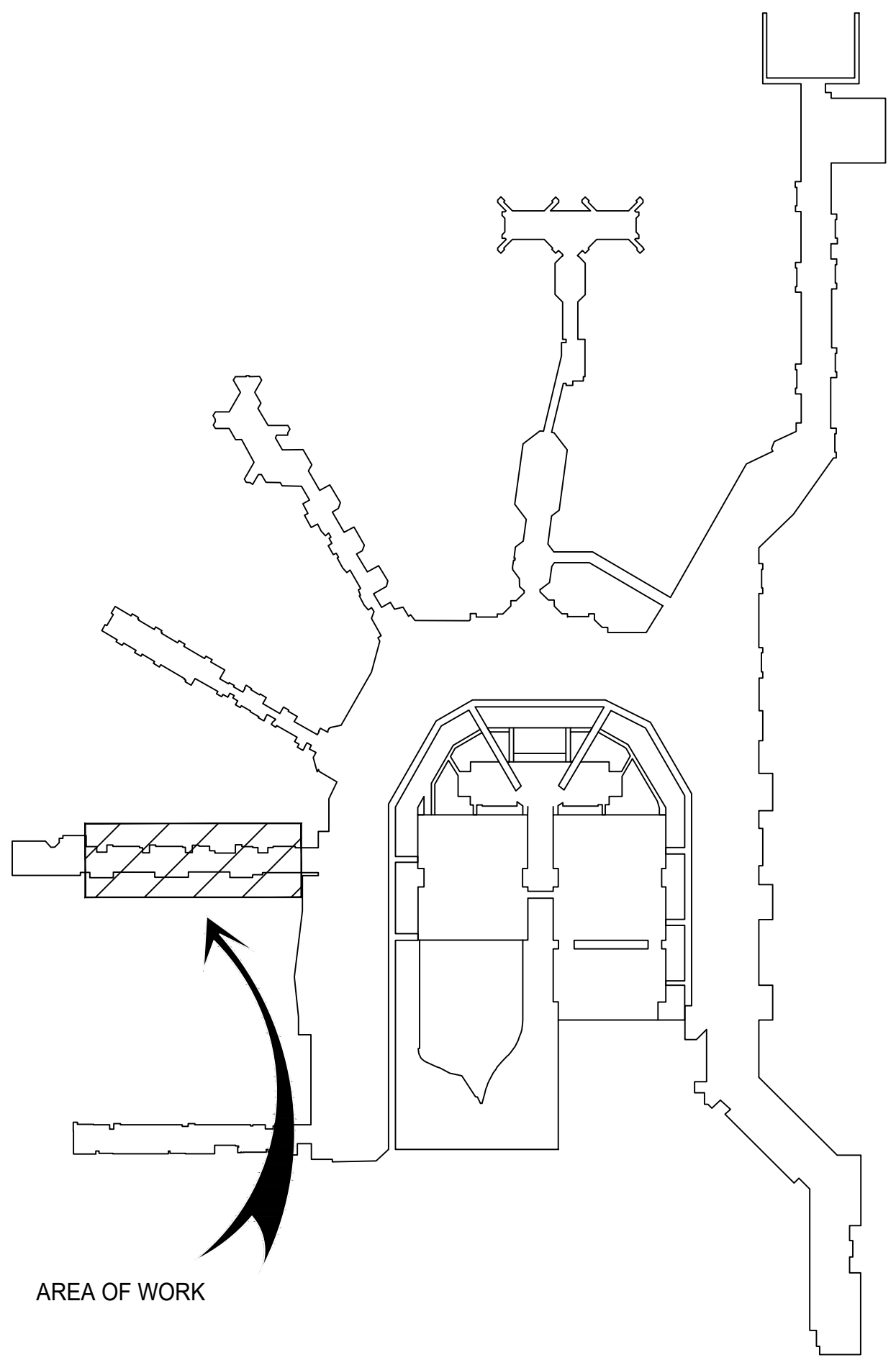
2 DIRECTORY
SCALE: N.T.S.

- REMOVE AND REPLACE THE FAILED WINDOW WALL STRUCTURES DOWN TO THE EXISTING STRUCTURE AND REPLACE WITH THE SAFTIFIRST GPX ONE HOUR FIRE RATED WINDOW WALL SYSTEM (L.M.I.) OR APPROVED EQUAL. GATES H4, H6-H8, AND H10.
- REMOVE AND REPLACE THE FAILED WINDOW WALL DOWN TO THE EXISTING STRUCTURE AND REPLACE WITH ALDORA ALUMINUM & GLASS PRODUCTS SERIES SMI-175 ALUMINUM WINDOW WALL SYSTEM OR APPROVED EQUAL GATE H3.
- REMOVE THE SEALANTS AROUND THE GLAZING SYSTEM AND REINSTALL NEW SEALANTS. IT SHOULD BE NOTED THAT SEALANT MAINTENANCE IS REQUIRED AT 5-YEAR INTERVALS IN ACCORDANCE WITH THE REQUIREMENTS OF THE FLORIDA BUILDING CODE SECTION 2415 TO INSURE A WATERTIGHT ASSEMBLY.
- REPAIR PARTS OF THE METAL STRUCTURAL ELEMENTS THAT MAY HAVE CORRODED. STEEL ELEMENTS THAT HAVE LOST MORE THAN 10% OF ITS CROSS-SECTIONAL AREA WILL BE REINFORCED WITH ADDITION OF FLAT PLATES AND/OR ANGLES WELDED TO RESTORE THE STRUCTURAL INTEGRITY OF THE MEMBER. THE MEMBERS TO BE REPAIRED SHALL BE WIRE BRUSHED TO REMOVE SURFACE RUST AND FLAKING MATERIAL AND PAINTED WITH A RUST INHIBITIVE PRIMER.
- CONSTRUCTION SHALL CONFORM TO THE 1998 LIFE SAFETY MASTER PLAN FOR THE TERMINAL COMPLEX. EXISTING PORTIONS OF BUILDINGS SHALL COMPLY WITH THE PROVISIONS OF EXISTING OCCUPANCIES AS SET FORTH IN THE FLORIDA FIRE PREVENTION CODE.
- GLAZING IN WINDOWS SHALL BE CATEGORY II SAFETY GLAZING - FBC 2406.4.3, WHEN EXPOSED GLAZED AREA IS LARGER THAN 36" A.F.F., WHEN THERE IS A WALKING SURFACE WITHIN 36" HORIZONTALLY OF GLAZING.
- FOR IMPAIRMENT OF SYSTEMS REFER TO NFPA 72:142.2.2; NFPA 13:26.1; NFPA 1:13.3.4; NFPA 25:CH 15.

3 SCOPE OF WORK
SCALE: N.T.S.



5 AERIAL MAP
SCALE: N.T.S.



6 SITE PLAN
SCALE: N.T.S.



305 CONSULTING ENGINEERS LLC
ENGINEERS + PLANNERS
13944 S.W. 8 Street, Suite 211
Miami, Florida 33184 (786) 409-5548
FL Certificate of Authorization No.: 30247
Enrique M. Zuniga, P.E. PE 38883

BL + A ARCHITECTS

ENRIQUE M. ZÚÑIGA
FLORIDA, P.E. No. 38883

PROJECT:
MIA South Terminal Concourse H Rehabilitation - Phase 1
21 MIAD CIRCLE
MIAMI, FLORIDA 33126

NO.	DATE	BY	DESCRIPTION
3	4/3/2024	CNZ	PRE-CONSTRUCTION
2	5/6/2022	CNZ	BLOG-DEPT. COMMENTS
1	3/8/2022	CNZ	BLOG-DEPT. COMMENTS

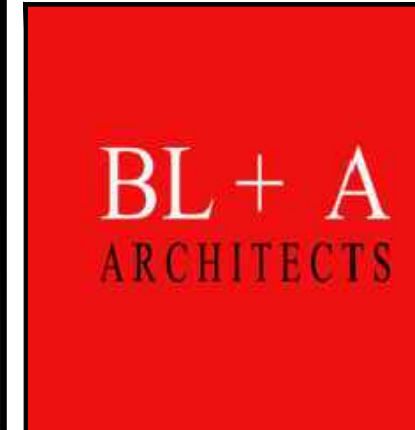
DATE: FEBRUARY 4, 2022
SCALE: AS SHOWN
DESIGN BY: E.M.Z.
DRAWN BY: C.N.Z.
REVIEWED BY: E.M.Z.
PROJECT NO.: 18-0305.02
DRAWING TITLE: INDEX & PROJECT INFORMATION
DRAWING NO.:

G0.02
SHEET NO.: 2 OF 42

revised sheet G0.02 for addendum # 2



305 CONSULTING ENGINEERS LLC
 ENGINEERS • PLANNERS
 13944 S.W. 8 Street, Suite 211
 Miami, Florida 33184 (786) 409-5548
 FL Certificate of Authorization No.: 30247
 Enrique M. Zuriga, P.E. PE 38883

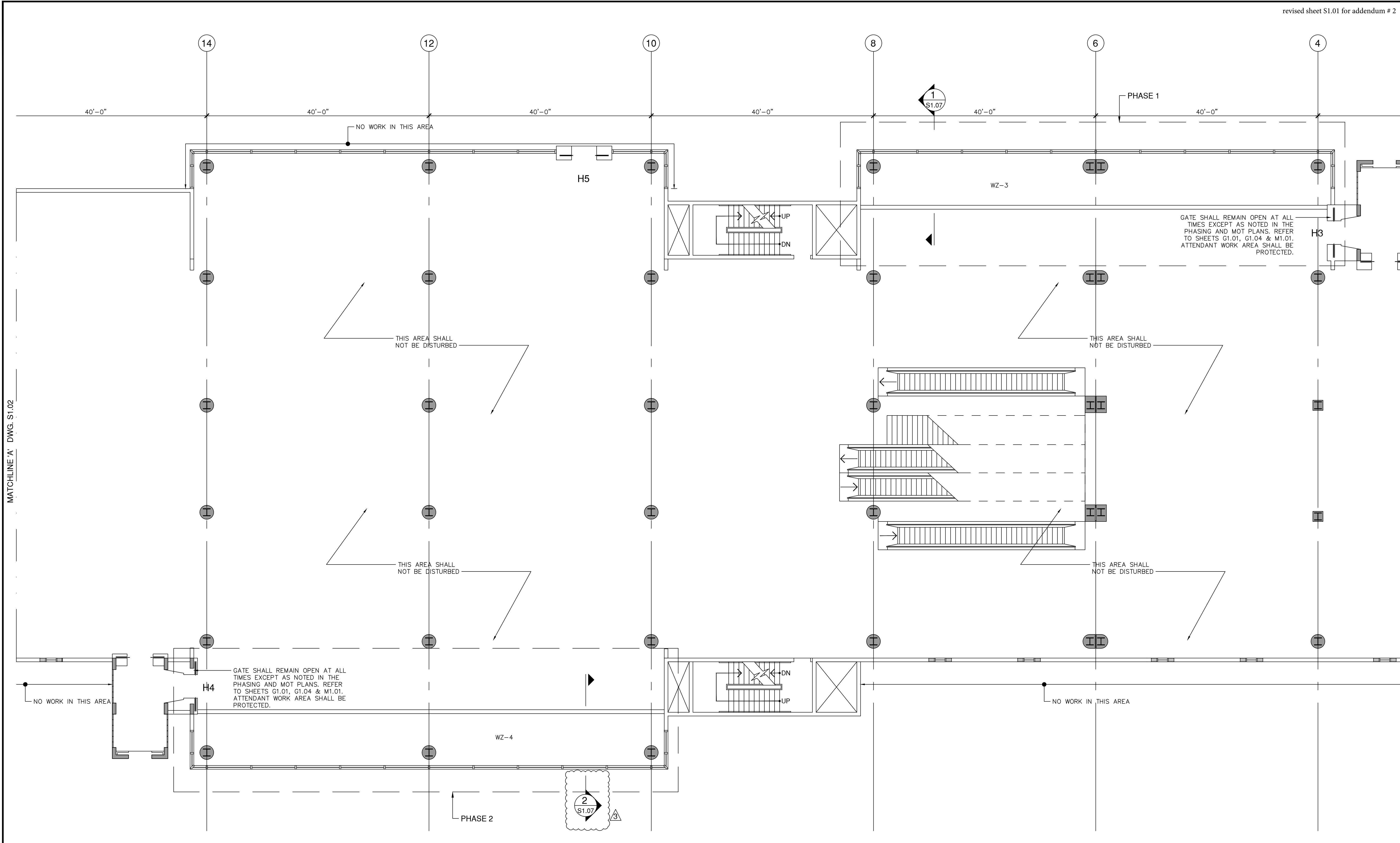


ENRIQUE M. ZURIGA
 FLORIDA, P.E. No. 38883

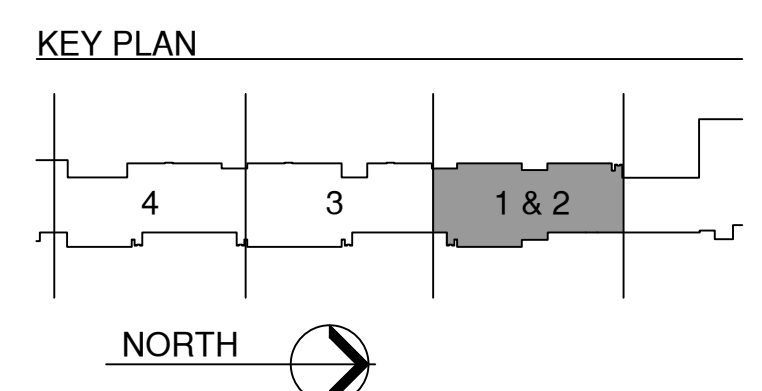
PROJECT:
**MIA South Terminal Concourse H
 Rehabilitation - Phase 1**
 21 MIAD CIRCLE
 MIAMI, FLORIDA 33126

REVISIONS			
NO.	DATE	BY	DESCRIPTION
3	4/3/2024	CNZ	PRE-CONSTRUCTION
2	5/6/2022	CNZ	BLOG - DEPT. COMMENTS
1	3/8/2022	CNZ	BLOG - DEPT. COMMENTS

DATE: FEBRUARY 4, 2022
 SCALE: AS SHOWN
 DESIGN BY: E.M.Z.
 DRAWN BY: C.N.Z.
 REVIEWED BY: E.M.Z.
 PROJECT NO.: 18-0305.02
 DRAWING TITLE: FRAMING PLAN
 DRAWING NO.: S1.01
 SHEET NO.: 27 OF 42



SECOND FLOOR FRAMING PLAN - PHASE 1 & 2
 SCALE: 1/8" = 1'-0"



MATCHLINE A' DWG. S1.02

PLOT DATE: 4/3/2024
 \Projects\18 - 0305.02 - MIA Glazing Concourse H\1-ACAD\Sheet.sst

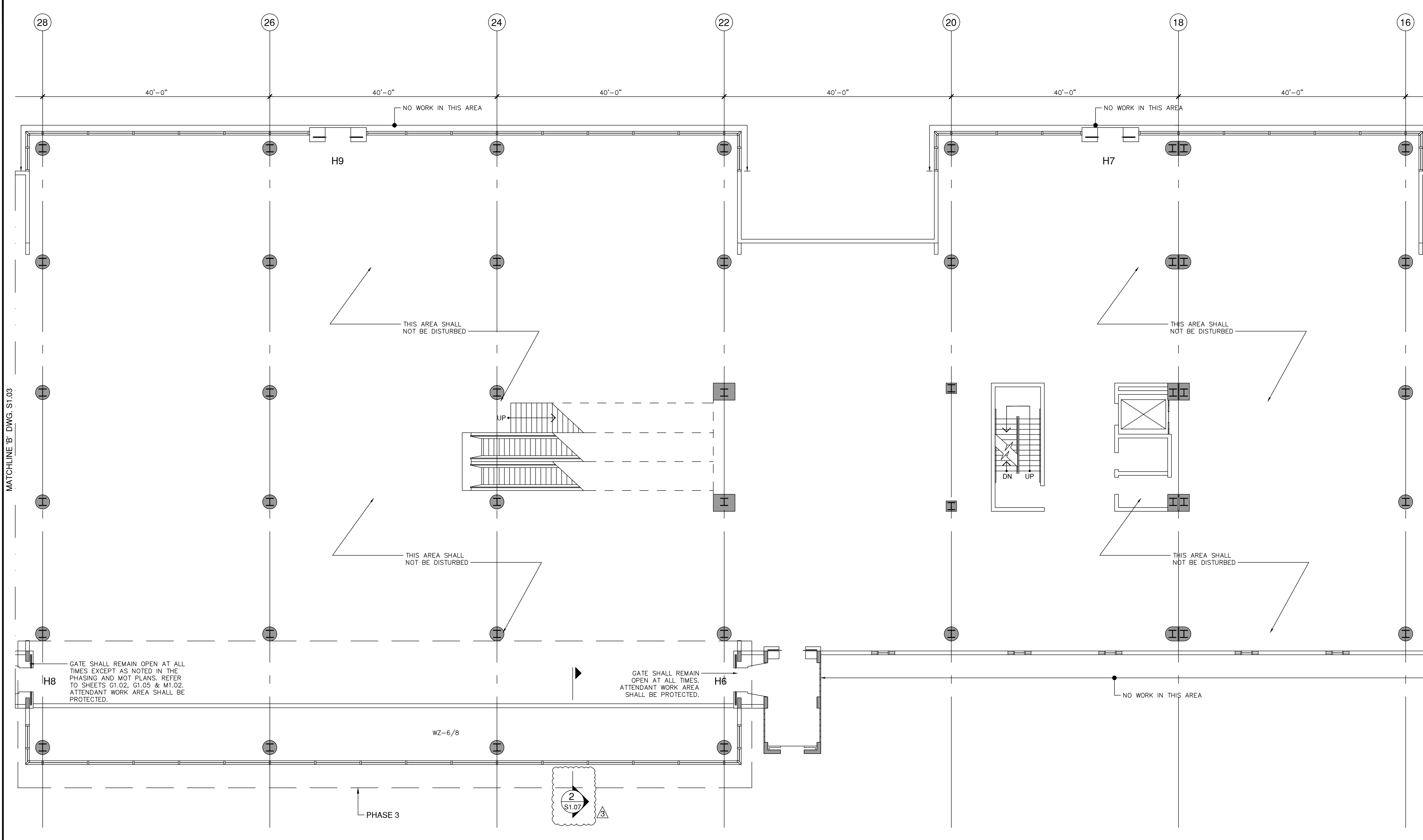


305 CONSULTING ENGINEERS LLC
 ENGINEERS • PLANNERS
 13944 S.W. 8 Street, Suite 211
 Miami, Florida 33184 (786) 409-5548
 FL Certificate of Authorization No.: 30247
 Enrique M. Zuriga, P.E. PE 38883

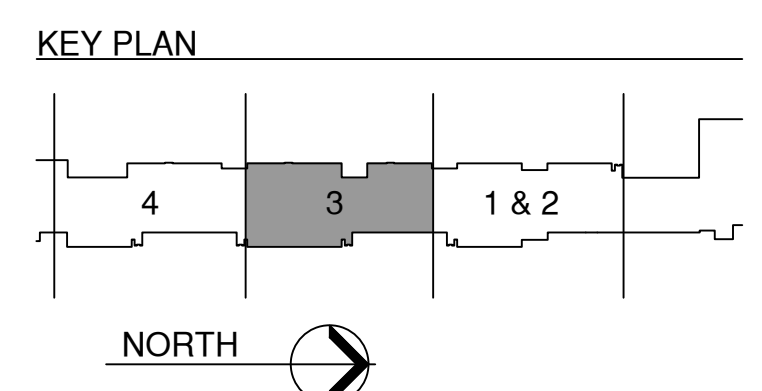


ENRIQUE M. ZURIGA
 FLORIDA, P.E. No. 38883

**MIA South Terminal Concourse H
 Rehabilitation - Phase 1**
 21 MIAD CIRCLE
 MIAMI, FLORIDA 33126



SECOND FLOOR FRAMING PLAN - PHASE 3
 SCALE: 1/8" = 1'-0"



REVISIONS			
NO.	DATE	BY	DESCRIPTION
3	4/3/2024	CNZ	PRE-CONSTRUCTION
2	5/6/2022	CNZ	BLOG - DEPT. COMMENTS
1	3/8/2022	CNZ	BLOG - DEPT. COMMENTS

DATE:	FEBRUARY 4, 2022
SCALE:	AS SHOWN
DESIGN BY:	E.M.Z.
DRAWN BY:	C.N.Z.
REVIEWED BY:	E.M.Z.
PROJECT NO.:	18-0305.02
DRAWING TITLE:	FRAMING PLAN
DRAWING NO.:	S1.02
SHEET NO.:	28 OF 42

MATCHLINE 'B' DWG. S1.03

MATCHLINE 'A' DWG. S1.01

PLOT DATE: 4/3/2024
 \Projects\18 - 0305.02 - MIA Glazing Concourse H\1-ACAD\Sheet set

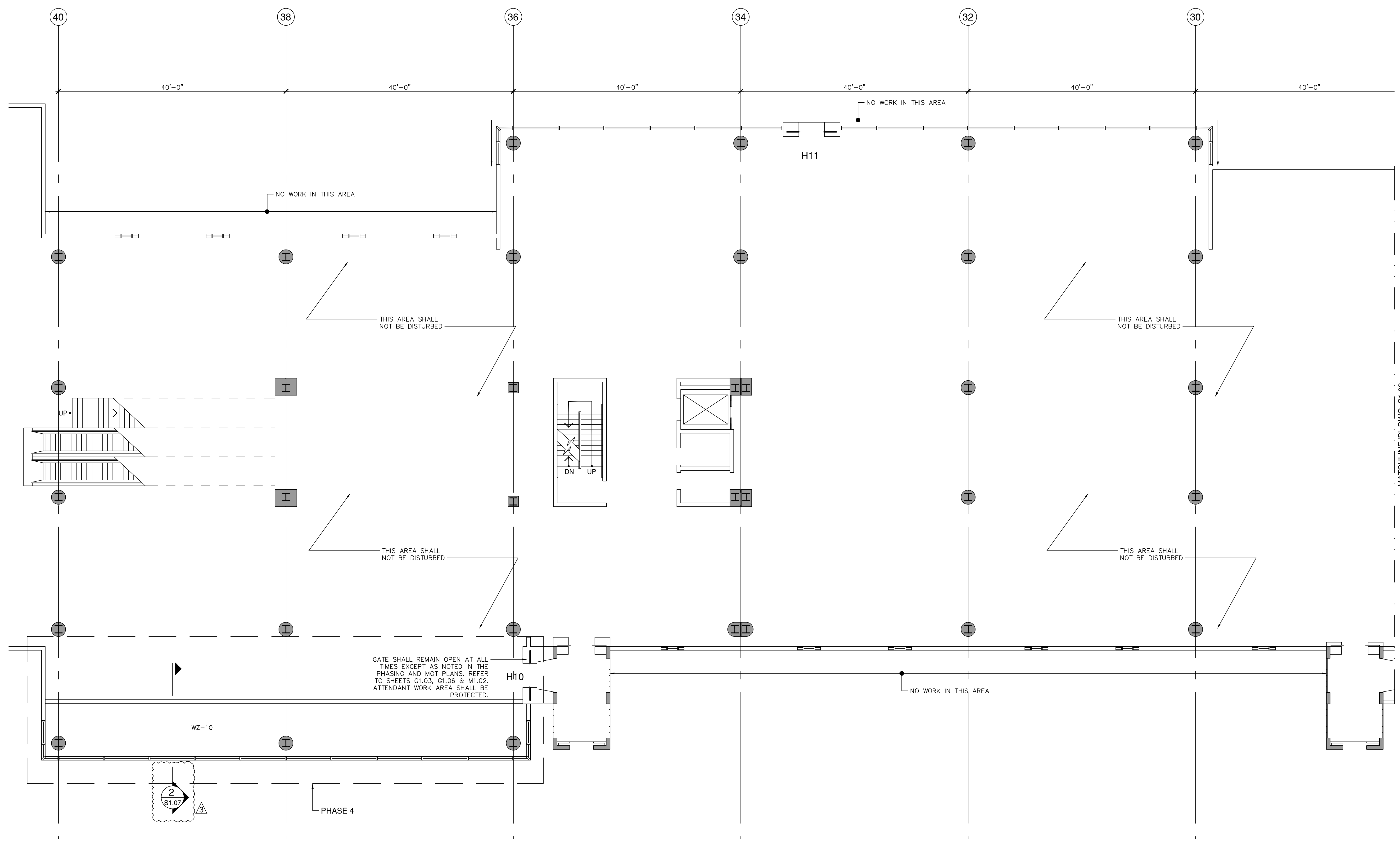


305 CONSULTING ENGINEERS LLC
 ENGINEERS • PLANNERS
 13944 S.W. 8 Street, Suite 211
 Miami, Florida 33184 (786) 409-5548
 FL Certificate of Authorization No.: 30247
 Enrique M. Zuriga, P.E. PE 38883

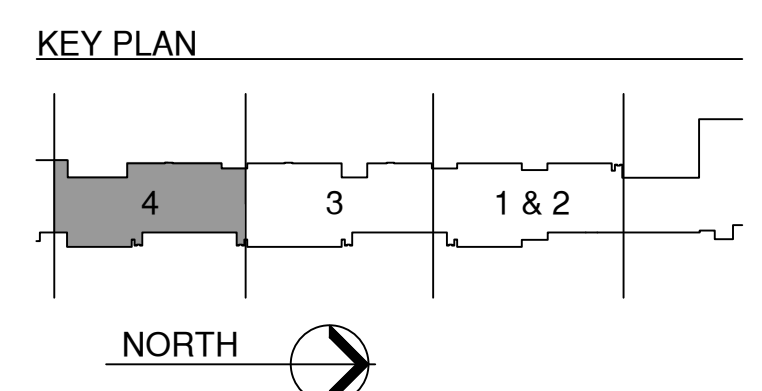


ENRIQUE M. ZURIGA
 FLORIDA, P.E. No. 38883

**MIA South Terminal Concourse H
 Rehabilitation - Phase 1**
 21 MIAD CIRCLE
 MIAMI, FLORIDA 33126



SECOND FLOOR FRAMING PLAN - PHASE 4
 SCALE: 1/8" = 1'-0"

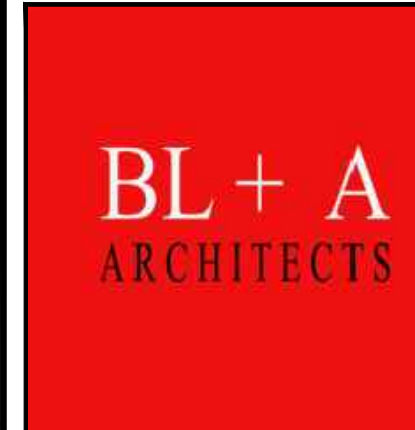


REVISIONS			
NO.	DATE	BY	DESCRIPTION
3	4/3/2024	CNZ	PRE-CONSTRUCTION
2	5/6/2022	CNZ	BLOG - DEPT. COMMENTS
1	3/8/2022	CNZ	BLOG - DEPT. COMMENTS

DATE:	FEBRUARY 4, 2022
SCALE:	AS SHOWN
DESIGN BY:	E.M.Z.
DRAWN BY:	C.N.Z.
REVIEWED BY:	E.M.Z.
PROJECT NO.:	18-0305.02
DRAWING TITLE:	FRAMING PLAN
DRAWING NO.:	S1.03
SHEET NO.:	29 OF 42



305 CONSULTING ENGINEERS LLC
 ENGINEERS • PLANNERS
 13944 S.W. 8 Street, Suite 211
 Miami, Florida 33184 (786) 409-5548
 FL Certificate of Authorization No.: 30247
 Enrique M. Zuriga, P.E. PE 38883

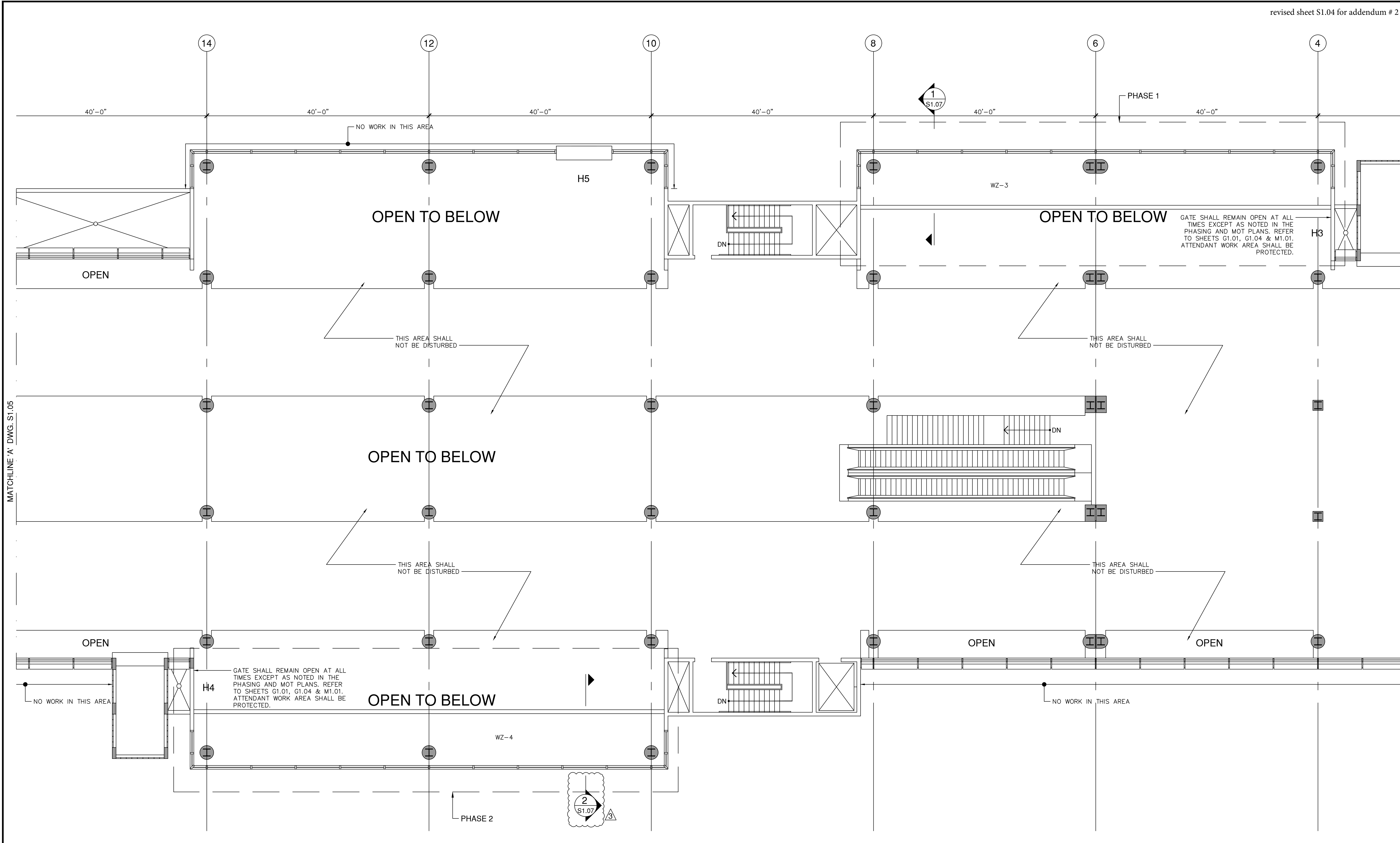


ENRIQUE M. ZURIGA
 FLORIDA, P.E. No. 38883

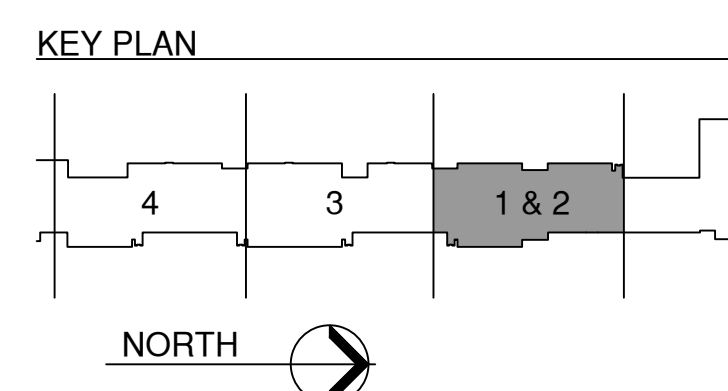
PROJECT:
**MIA South Terminal Concourse H
 Rehabilitation - Phase 1**
 21 MIAD CIRCLE
 MIAMI, FLORIDA 33126

REVISIONS			
NO.	DATE	BY	DESCRIPTION
3	4/3/2024	CNZ	PRE-CONSTRUCTION
2	5/6/2022	CNZ	BLOG - DEPT. COMMENTS
1	3/8/2022	CNZ	BLOG - DEPT. COMMENTS

DATE: FEBRUARY 4, 2022
 SCALE: AS SHOWN
 DESIGN BY: E.M.Z.
 DRAWN BY: C.N.Z.
 REVIEWED BY: E.M.Z.
 PROJECT NO.: 18-0305.02
 DRAWING TITLE: FRAMING PLAN
 DRAWING NO.: **S1.04**
 SHEET NO.: 30 OF 42



THIRD FLOOR FRAMING PLAN - PHASE 1 & 2
 SCALE: 1/8" = 1'-0"



MATCHLINE 'A' DWG. S1.05

PLOT DATE: 4/3/2024
 \Projects\18 - 0305.02 - MIA Glazing Concourse H\1-ACAD\Sheet.spl



305 CONSULTING ENGINEERS LLC
 ENGINEERS • PLANNERS
 13944 S.W. 8 Street, Suite 211
 Miami, Florida 33184 (786) 409-5548
 FL Certificate of Authorization No.: 30247
 Enrique M. Zuriga, P.E. PE 38883

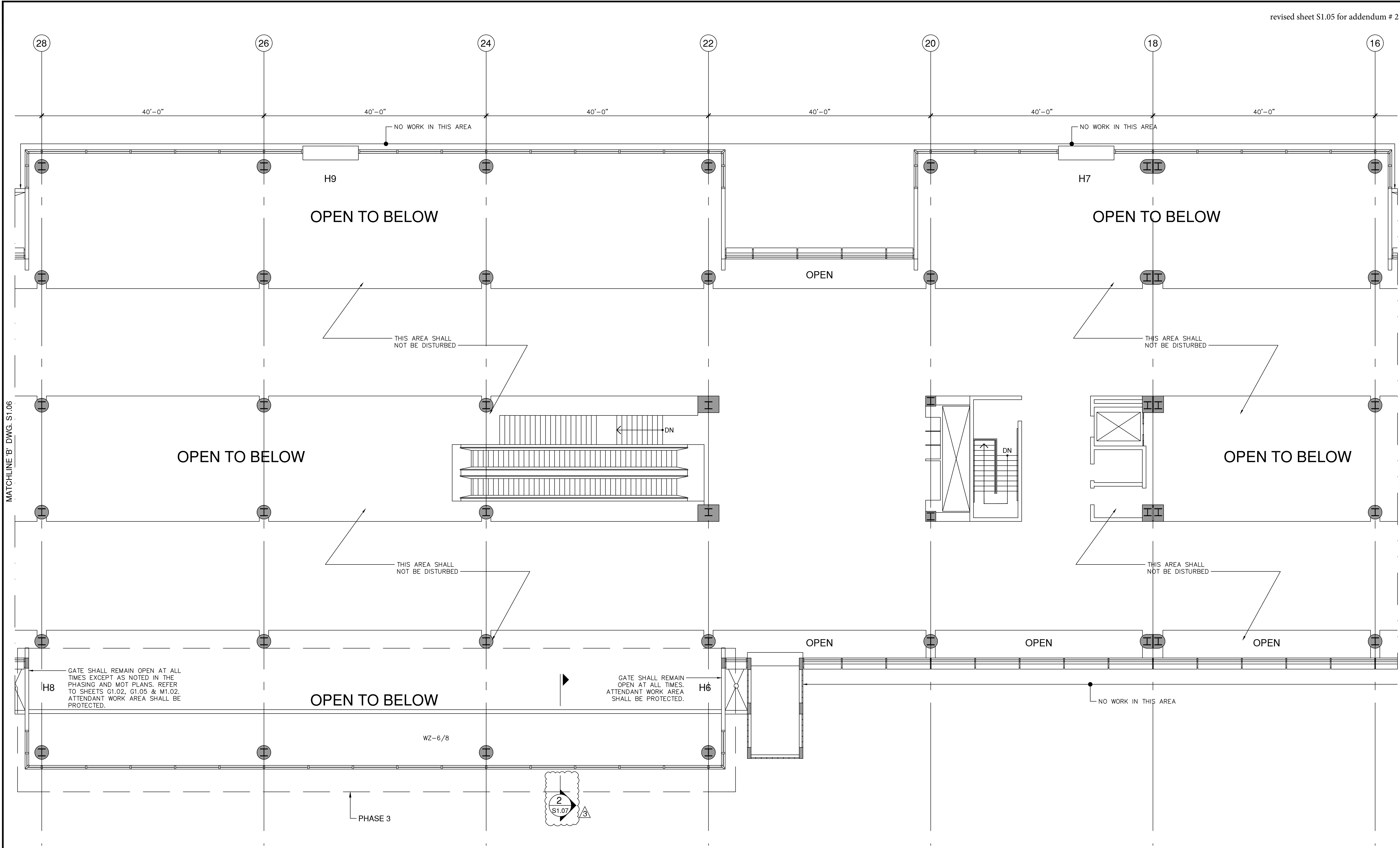


ENRIQUE M. ZURIGA
 FLORIDA, P.E. No. 38883

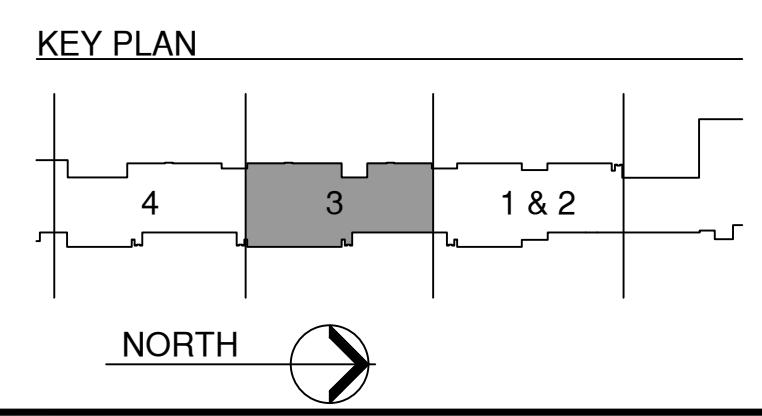
PROJECT:
**MIA South Terminal Concourse H
 Rehabilitation - Phase 1**
 21 MIAD CIRCLE
 MIAMI, FLORIDA 33126

REVISIONS	
NO.	DESCRIPTION
3	4/3/2024 CNZ PRE-CONSTRUCTION
2	5/6/2022 CNZ BLOG - DEPT. COMMENTS
1	3/8/2022 CNZ BLOG - DEPT. COMMENTS

DATE:	FEBRUARY 4, 2022
SCALE:	AS SHOWN
DESIGN BY:	E.M.Z.
DRAWN BY:	C.N.Z.
REVIEWED BY:	E.M.Z.
PROJECT NO.:	18-0305.02
DRAWING TITLE:	FRAMING PLAN
DRAWING NO.:	S1.05
SHEET NO.:	31 OF 42



THIRD FLOOR FRAMING PLAN - PHASE 3
 SCALE: 1/8" = 1'-0"



MATCHLINE 'B' DWG. S1.06

MATCHLINE 'A' DWG. S1.04

PLOT DATE: 4/3/2024
 \Projects\18 - 0305.02 - MIA Glazing Concourse H\1-ACAD\Sheet set



305 CONSULTING ENGINEERS LLC
 ENGINEERS • PLANNERS
 13944 S.W. 8 Street, Suite 211
 Miami, Florida 33184 (786) 409-5548
 FL Certificate of Authorization No.: 30247
 Enrique M. Zuriga, P.E. PE 38883

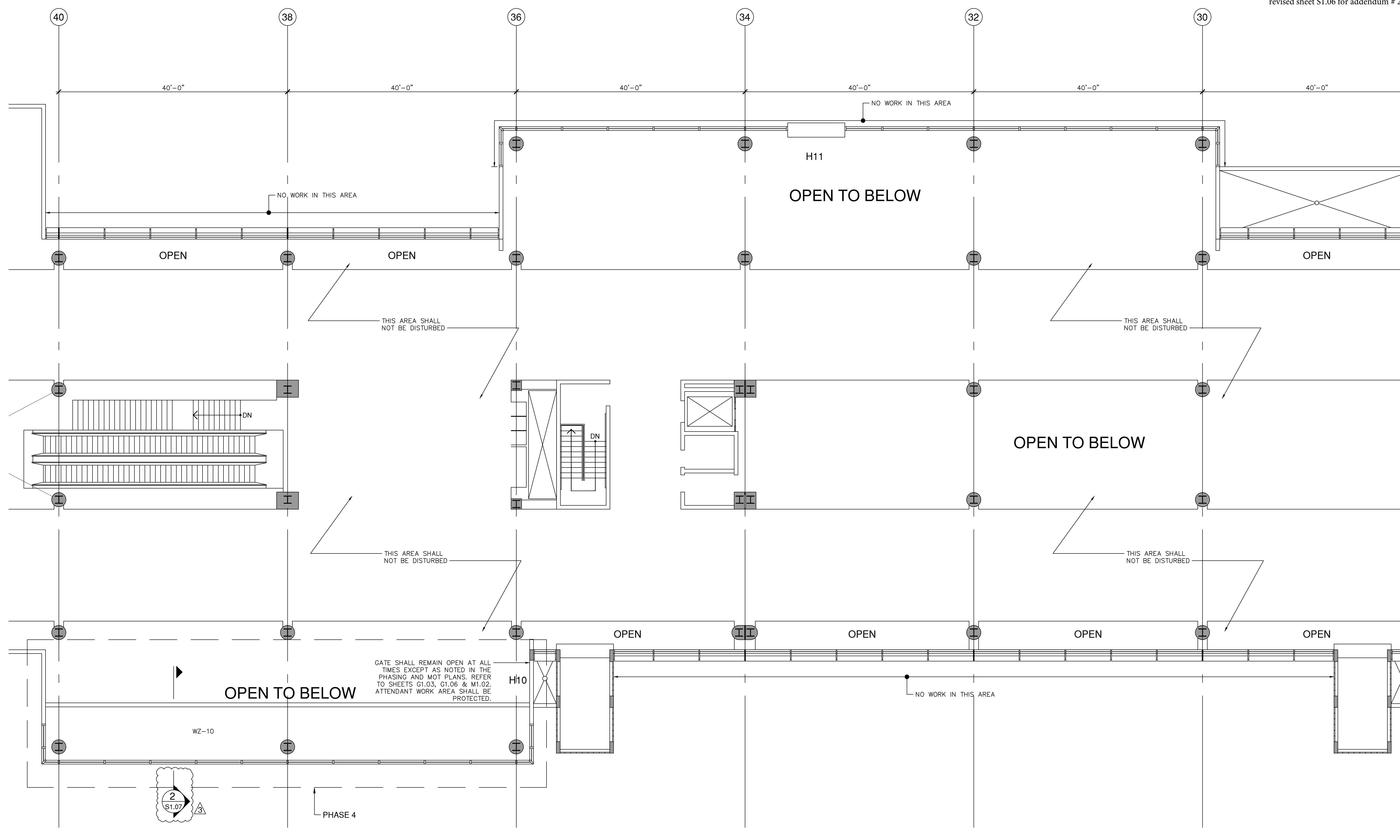


ENRIQUE M. ZURIGA
 FLORIDA, P.E. No. 38883

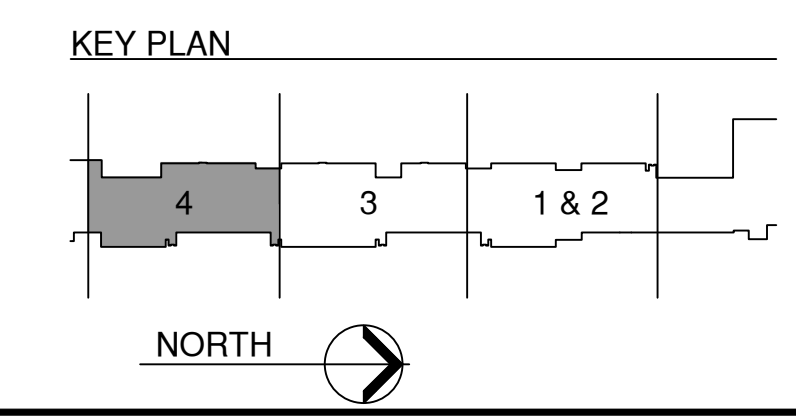
PROJECT:
**MIA South Terminal Concourse H
 Rehabilitation - Phase 1**
 21 MIAD CIRCLE
 MIAMI, FLORIDA 33126

REVISIONS			
NO.	DATE	BY	DESCRIPTION
3	4/3/2024	CNZ	PRE-CONSTRUCTION
2	5/6/2022	CNZ	BLOG - DEPT. COMMENTS
1	3/8/2022	CNZ	BLOG - DEPT. COMMENTS

DATE:	FEBRUARY 4, 2022
SCALE:	AS SHOWN
DESIGN BY:	E.M.Z.
DRAWN BY:	C.N.Z.
REVIEWED BY:	E.M.Z.
PROJECT NO.:	18-0305.02
DRAWING TITLE:	FRAMING PLAN
DRAWING NO.:	S1.06
SHEET NO.:	32 OF 42



THIRD FLOOR FRAMING PLAN - PHASE 4
 SCALE: 1/8" = 1'-0"



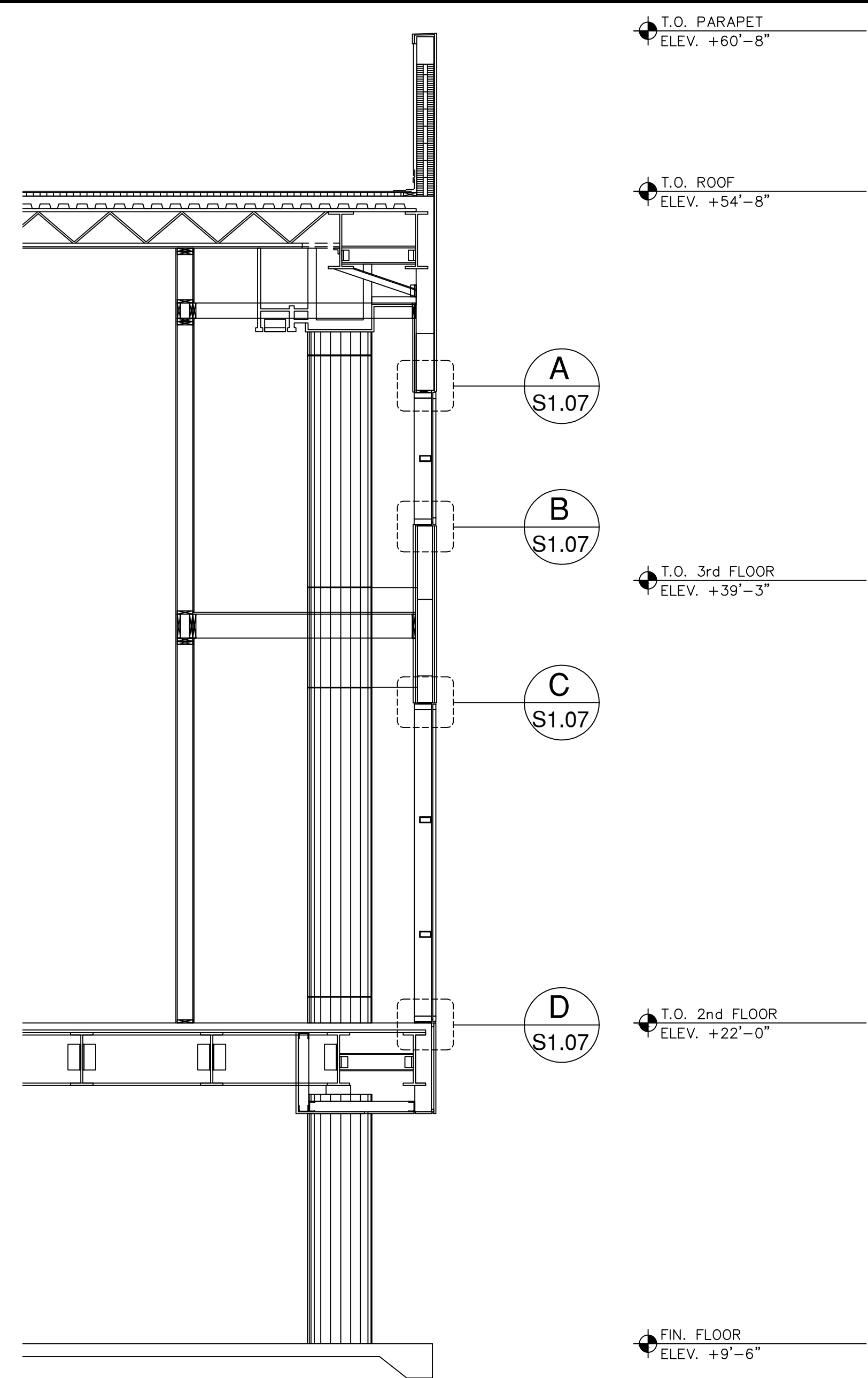
PLOT DATE: 4/3/2024
 \Projects\18 - 0305.02 - MIA Glazing Concourse H\1-ACAD\Sheet.spl

NO.	DATE	BY	DESCRIPTION
1	4/3/2024	CNZ	PRE-CONSTRUCTION
2	5/6/2022	CNZ	BLOG - DEPT. COMMENTS
3	3/8/2022	CNZ	BLOG - DEPT. COMMENTS

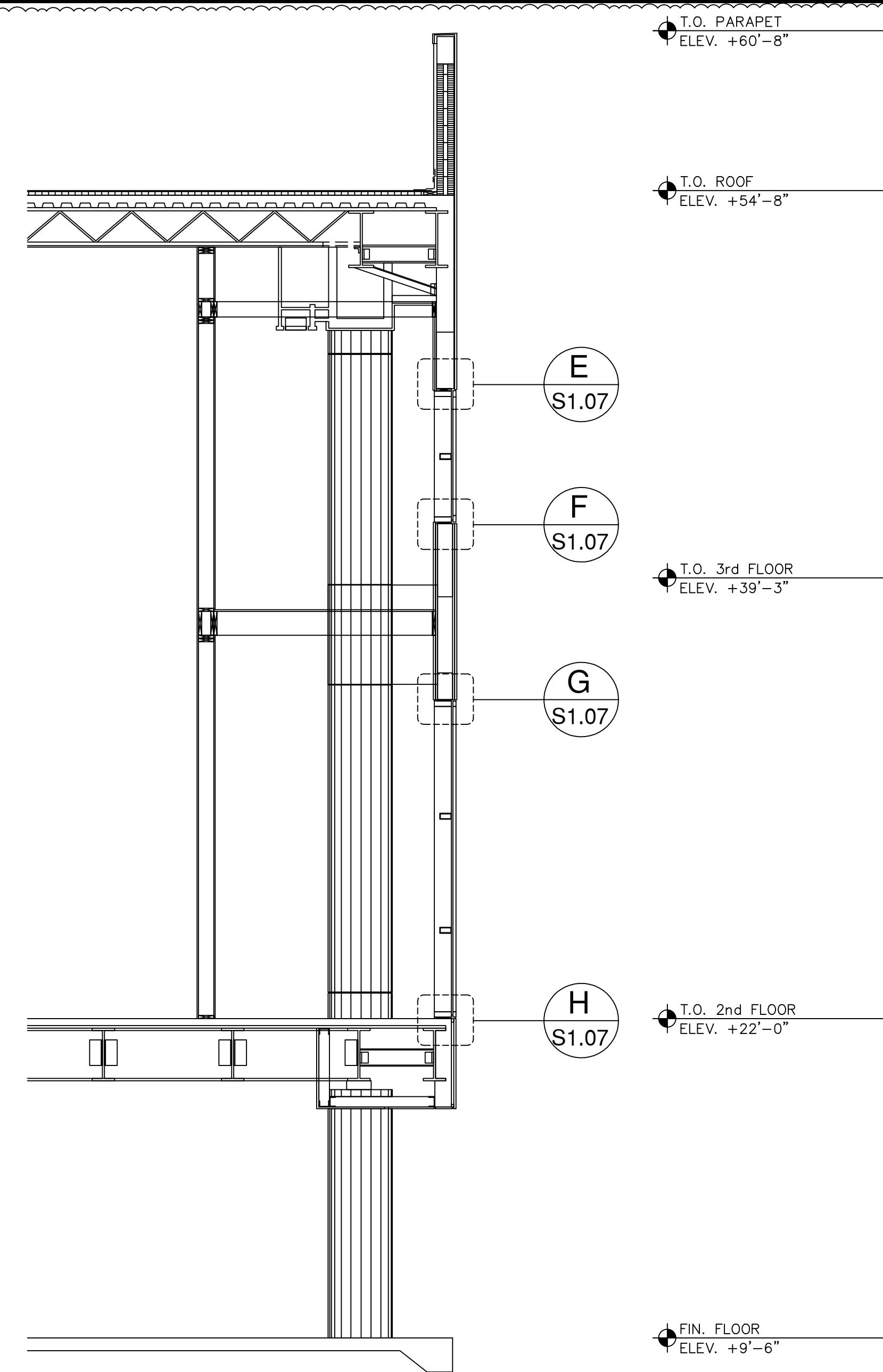
DATE:	FEBRUARY 4, 2022
SCALE:	AS SHOWN
DESIGN BY:	E.M.Z.
DRAWN BY:	C.N.Z.
REVIEWED BY:	E.M.Z.
PROJECT NO.:	18-0305.02
DRAWING TITLE:	SECTION & DETAILS
DRAWING NO.:	S1.07
SHEET NO.:	33 OF 42

revised sheet S1.07 for addendum # 2

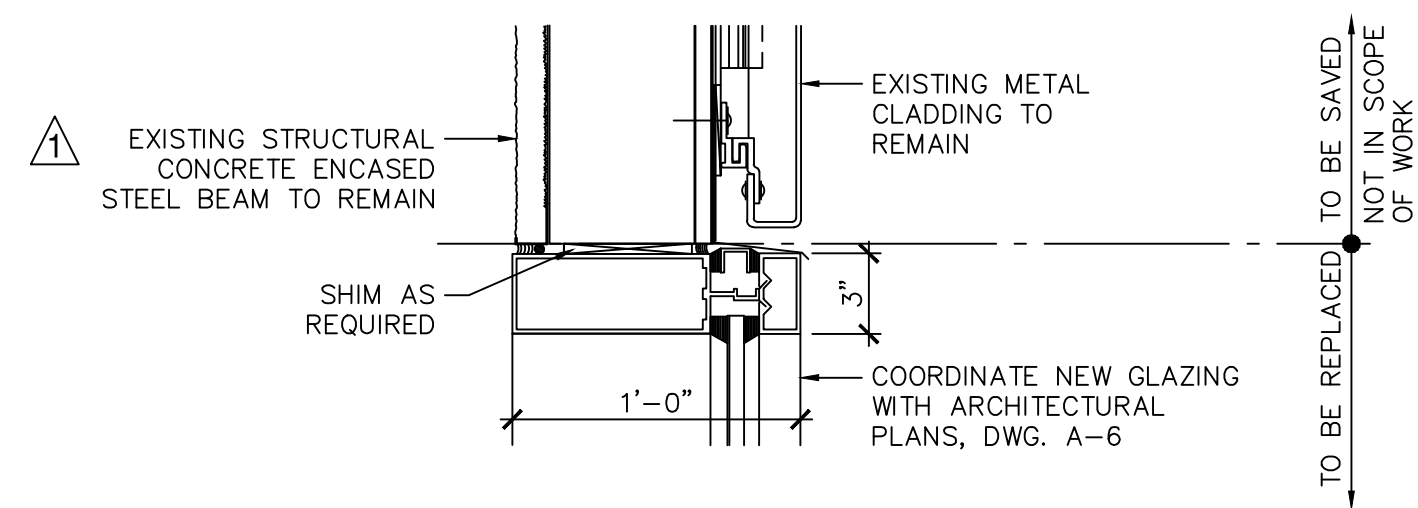
NOTE:
ALL SHIMS SHALL BE HIGH-IMPACT,
NONMETALLIC, NON-COMPRESSIBLE
SUCH AS CRL SHIMSTACK SHIMS AS
MANUFACTURED BY C.R. LAURENCE
CO. OR APPROVED EQUAL



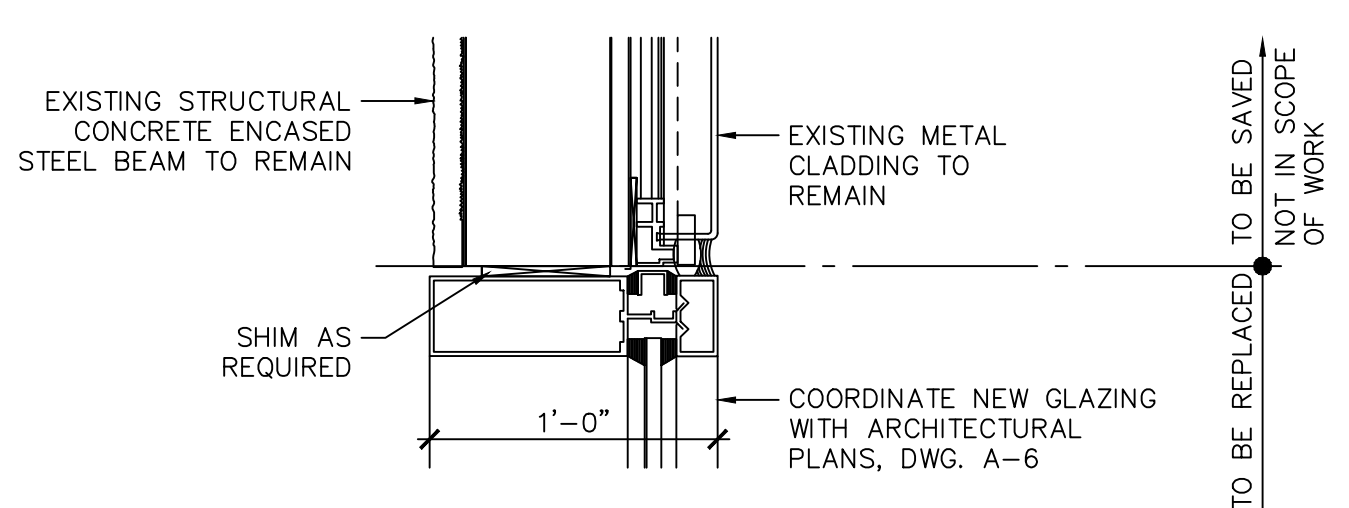
1 SECTION
S1.07 SC: 1/4" = 1'-0"



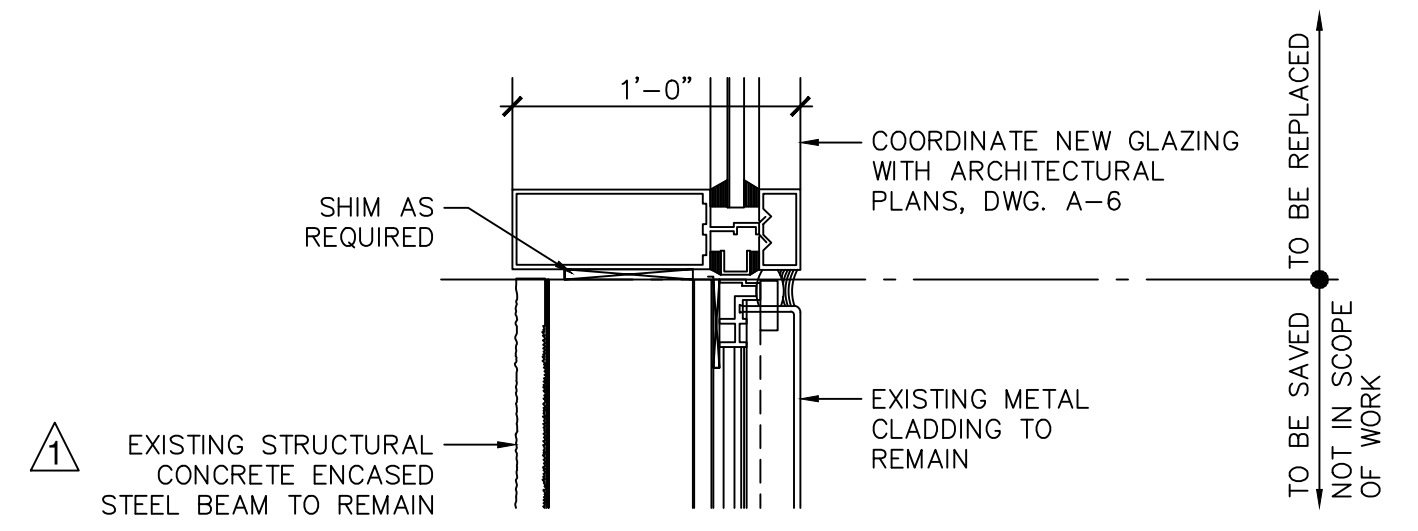
2 SECTION
S1.07 SC: 1/4" = 1'-0"



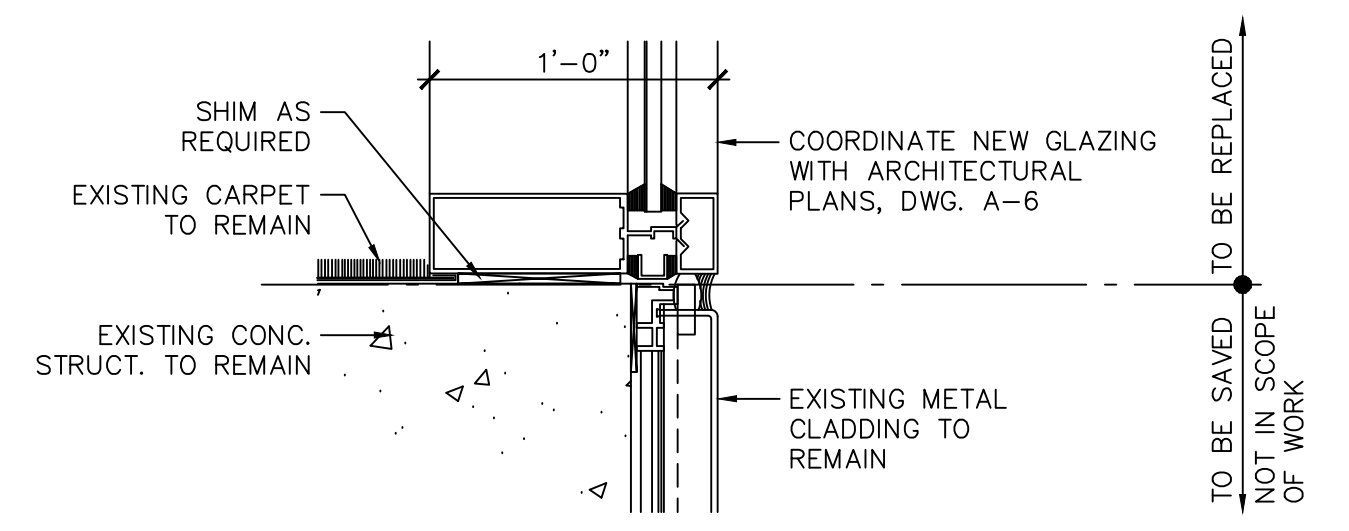
DETAIL A
S1.07 SC: 1 1/2" = 1'-0"



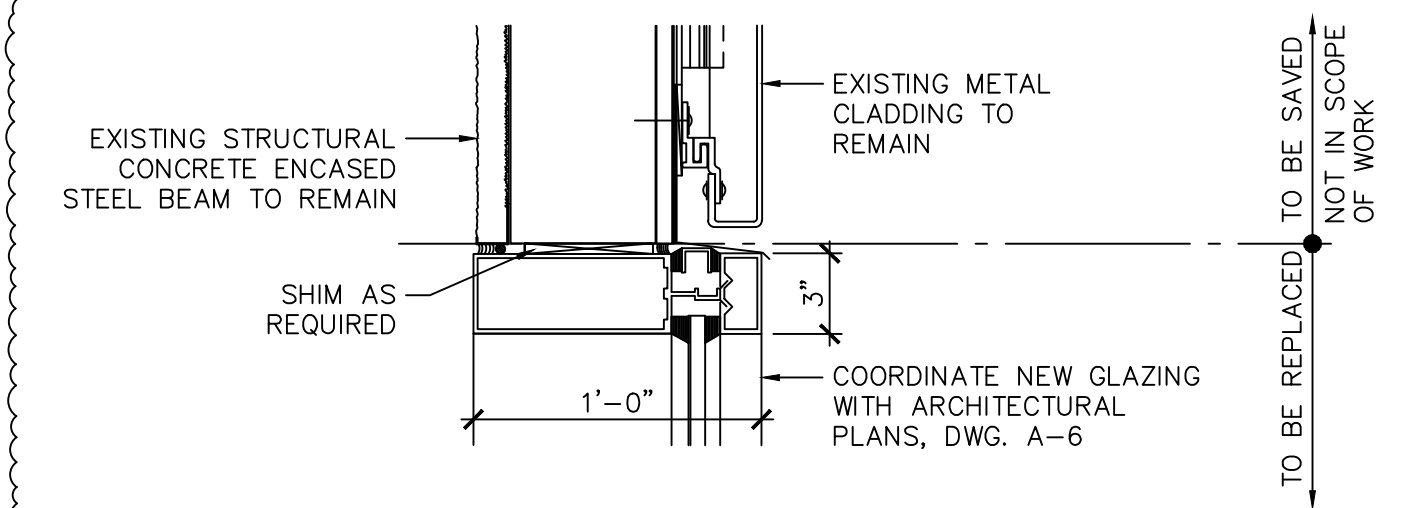
DETAIL C
S1.07 SC: 1 1/2" = 1'-0"



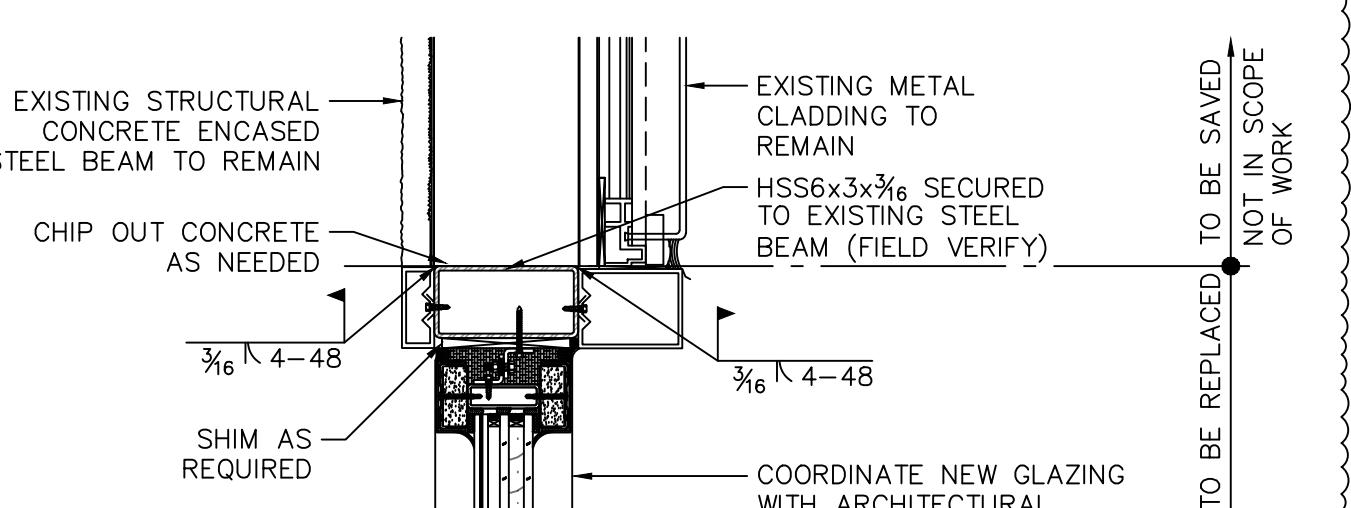
DETAIL B
S1.07 SC: 1 1/2" = 1'-0"



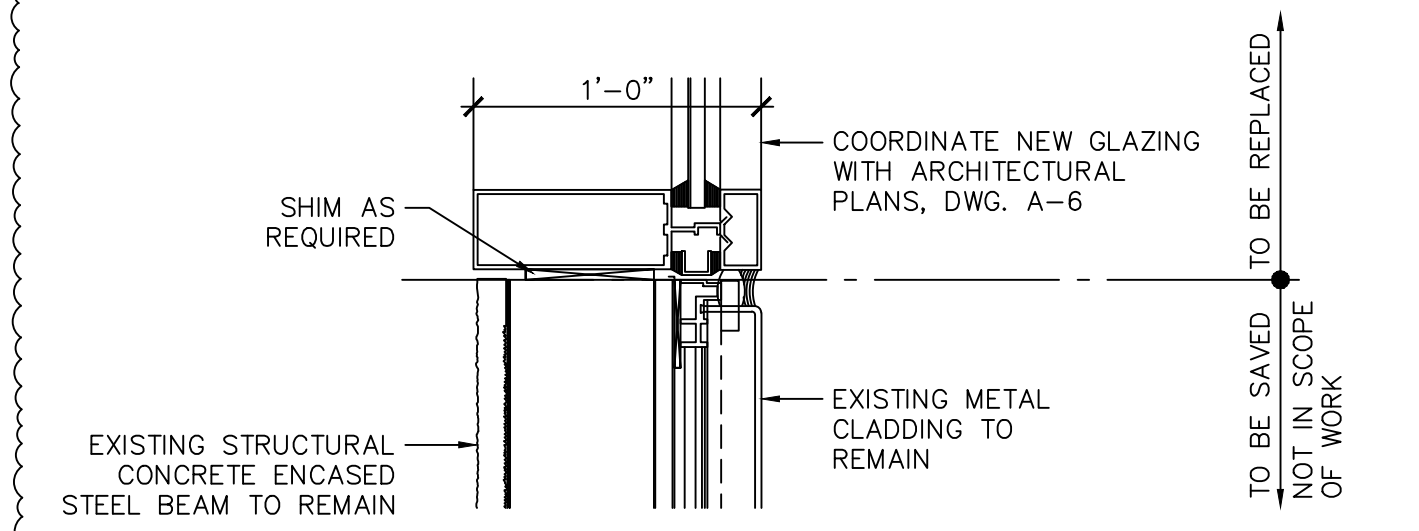
DETAIL D
S1.07 SC: 1 1/2" = 1'-0"



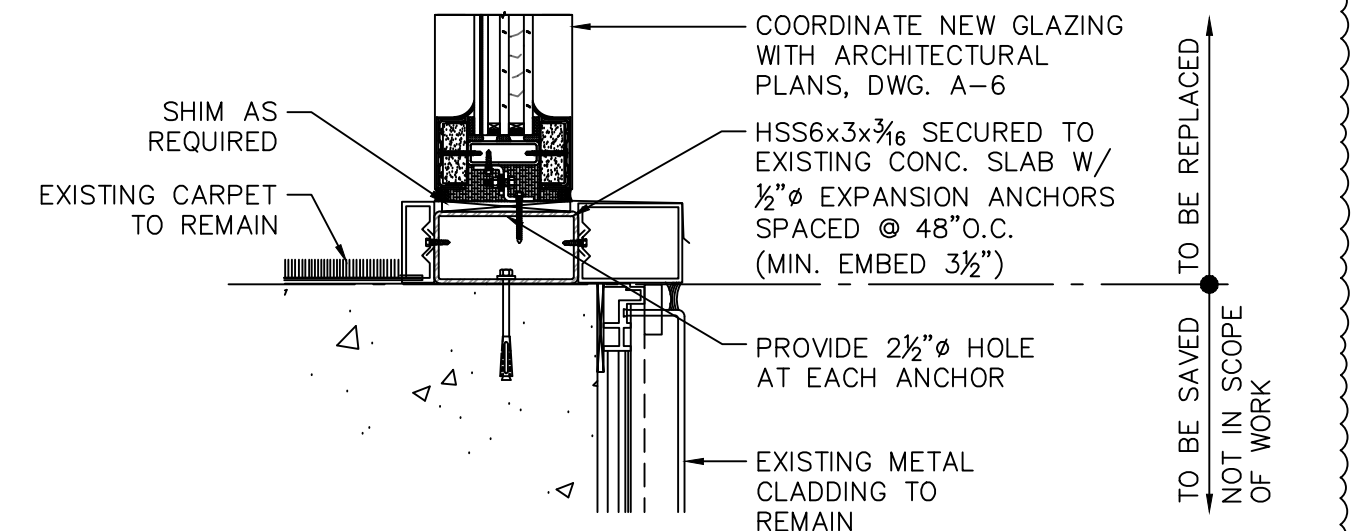
DETAIL E
S1.07 SC: 1 1/2" = 1'-0"



DETAIL G
S1.07 SC: 1 1/2" = 1'-0"



DETAIL F
S1.07 SC: 1 1/2" = 1'-0"



DETAIL H
S1.07 SC: 1 1/2" = 1'-0"

PLOT DATE: 4/3/2024
Project: 18-0305.02 - MIA Glazing Concourse H - ACAD sheet set

ADDENDUM No. 2

ATTACHMENT 2

**Technical Specifications –
Division 08 - Opening
REVISION**

1. Test Reports: Submit certified test reports showing compliance with specified performance characteristics and physical properties.
 2. Installer Qualification Data: Submit installer qualification data.
 3. Manufacturer Qualification Data: Submit manufacturer qualification data.
- E. Close-out Submittals:
1. Warranty: Submit warranty documents specified herein.

1.05 PROJECT CONDITIONS

- A. Field Measurements: Verify actual measurements and openings by field measurement before fabrication; show recorded measurements on shop drawings. Coordinate field measurements and fabrication schedule with construction progress to avoid construction delays.

1.06 WARRANTY

- A. Special Warranty: Submit, for Owner's acceptance, manufacturer's standard written warranty document executed by an authorized company official.
1. Beneficiary: Issue warranty in the legal name of the Owner.
 2. Warranty Period: 2 years commencing on Date of Substantial Completion.
 3. Warranty Acceptance: Owner is sole authority who will determine acceptability of manufacturer's warranty documents.

PART 2 - PRODUCTS

2.01 MANUFACTURERS Basis of Design

- A. Series SMI-175 Aluminum Window Wall System manufactured by Aldora Aluminum and Glass Products or approved equal.
- B. GPX Fire Rated Window Wall System as manufactured by Saffitfirst or approved equal.

2.02 MATERIALS

- A. Extrusions: ASTM B 221, 6063-T5 aluminum alloy.
- B. Aluminum Sheet, Painted Finish: ASTM B 209, 3003-H14 aluminum alloy, 0.080 inch minimum thickness.

2.03 WINDOW WALL FRAMING SYSTEM

- A. Description: Thermally improved framing system. Horizontal and vertical members shall have a nominal face dimension of 1-3/4 inches and 4-1/2 inch depth as indicated on Drawings. Provide a flush butt-glazed appearance on all sides with no protruding glass stops.
- B. Glass: Kuraray "Sentry Glass" Laminate composite; annealed heat strengthened, or tempered as required. Refer to Section 08 80 00 - GLAZING for additional information.

2. Notice of Acceptance FL 16382 R3-II GPX W (CMI)



Product Approval
USER: Public User

[Product Approval Menu](#) > [Product or Application Search](#) > [Application List](#) > **Application Detail**

OFFICE OF THE
SECRETARY

FL #	FL16382-R3										
Application Type	Revision										
Code Version	2020										
Application Status	Approved										
Comments											
Archived	<input type="checkbox"/>										
Product Manufacturer	SAFTIFIRST										
Address/Phone/Email	325 NEWHALL STREET SAN FRANCISCO, CA 94124 (415) 824-4090 Ext 221 SHARONH@SAFTI.COM										
Authorized Signature	SHARON HEAGNEY SHARONH@SAFTI.COM										
Technical Representative											
Address/Phone/Email											
Quality Assurance Representative											
Address/Phone/Email											
Category	Panel Walls										
Subcategory	Storefronts										
Compliance Method	Evaluation Report from a Florida Registered Architect or a Licensed Florida Professional Engineer <input type="checkbox"/> Evaluation Report - Hardcopy Received										
Florida Engineer or Architect Name who developed the Evaluation Report	Jalal Farooq										
Florida License	PE-81223										
Quality Assurance Entity	Architectural Testing, Inc., an Intertek Company										
Quality Assurance Contract Expiration Date	12/31/2023										
Validated By	JAVAD AHMAD PE, INC. <input checked="" type="checkbox"/> Validation Checklist - Hardcopy Received										
Certificate of Independence	FL16382_R3_COI_SS - Certificate of Independence.pdf										
Referenced Standard and Year (of Standard)	<table border="0"> <thead> <tr> <th>Standard</th> <th>Year</th> </tr> </thead> <tbody> <tr> <td>AAMA 501</td> <td>2015</td> </tr> <tr> <td>TAS 201</td> <td>1994</td> </tr> <tr> <td>TAS 202</td> <td>1994</td> </tr> <tr> <td>TAS 203</td> <td>1994</td> </tr> </tbody> </table>	Standard	Year	AAMA 501	2015	TAS 201	1994	TAS 202	1994	TAS 203	1994
Standard	Year										
AAMA 501	2015										
TAS 201	1994										
TAS 202	1994										
TAS 203	1994										
Equivalence of Product Standards Certified By	Florida Licensed Professional Engineer or Architect FL16382_R3_Equiv_SS -Equiv Ltr 501-15.pdf										
Sections from the Code											

Product Approval Method

Method 1 Option D

Date Submitted

01/12/2021

Date Validated

01/13/2021

Date Pending FBC Approval

01/20/2021

Date Approved

04/13/2021

Summary of Products

FL #	Model, Number or Name	Description
16382.1	GPX Fire Rated Window Wall System	Large Missile Impact Resistant Fire Rated Window Wall System
Limits of Use Approved for use in HVHZ: Yes Approved for use outside HVHZ: Yes Impact Resistant: Yes Design Pressure: +80/-80 Other: See drawing W13-58 for span vs. load combination and installation details.		Installation Instructions FL16382_R3_II_SS- GPX WW (LMI) DWG W13-58 (2020).pdf Verified By: Jalal Farooq PE# 81223 Created by Independent Third Party: Yes Evaluation Reports FL16382_R3_AE_SS - GPX Fire Rated Window Wall System (LMI)-PAE 2020.pdf Created by Independent Third Party: Yes

[Back](#)

[Next](#)

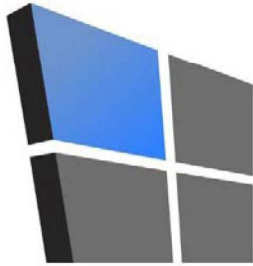
Contact Us :: 2601 Blair Stone Road, Tallahassee FL 32399 Phone: 850-487-1824

The State of Florida is an AA/EEO employer. Copyright 2007-2013 State of Florida. :: [Privacy Statement](#) :: [Accessibility Statement](#) :: [Refund Statement](#)

Under Florida law, email addresses are public records. If you do not want your e-mail address released in response to a public-records request, do not send electronic mail to this entity. Instead, contact the office by phone or by traditional mail. If you have any questions, please contact 850.487.1395. *Pursuant to Section 455.275(1), Florida Statutes, effective October 1, 2012, licensees licensed under Chapter 455, F.S. must provide the Department with an email address if they have one. The emails provided may be used for official communication with the licensee. However email addresses are public record. If you do not wish to supply a personal address, please provide the Department with an email address which can be made available to the public. To determine if you are a licensee under Chapter 455, F.S., please click [here](#).

Product Approval Accepts:





AL-FAROOQ CORPORATION

CONSULTING ENGINEERS & PRODUCT DEVELOPMENT

PRODUCT APPROVAL EVALUATION RULE CHAPTER #61G20-3 • METHOD 1 OPTION D

FL 16382

Date: 01/11/2021

Detailed Product Description:


Manufacturer: SAFTIFIRST, INC.

Manufacturer Address: 100 NORTH HILL DRIVE SUITE 12, BRISBANE, CA 94005

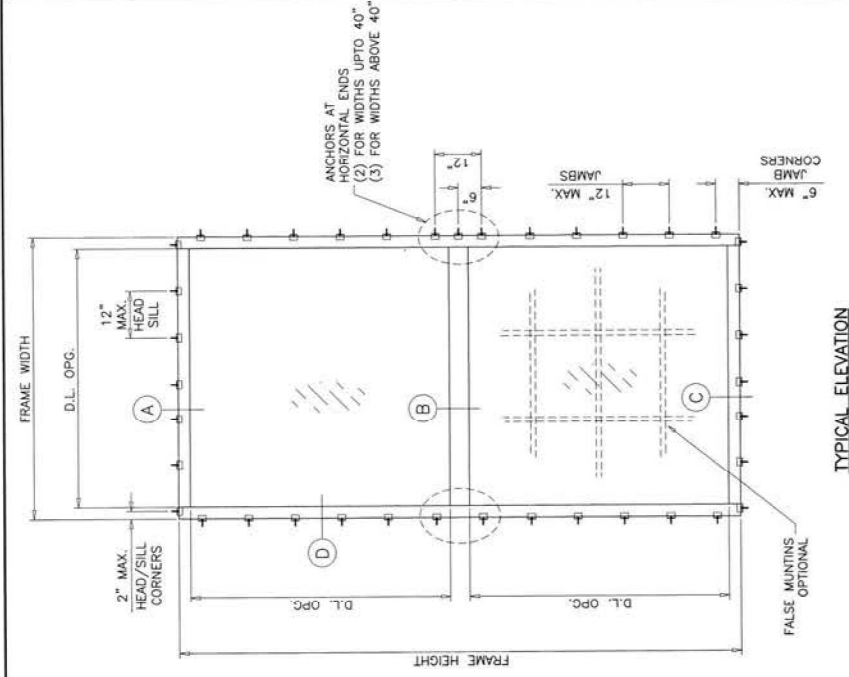
Model Name: GPX FIRE RATED WINDOW WALL SYSTEM

Maximum Load: +80 PSF, -80 PSF (Large Missile Impact)

Installation Drawings # W13-58

This product complies with the High Velocity Hurricane Zone (HVHZ) testing requirements.					
For maximum sizes, combination of span vs loads and anchor type refer to installation drawings.					
Comparative analysis used <input checked="" type="checkbox"/> Yes <input type="checkbox"/> No					
Mandatory Tests (Tested in accordance with AAMA 501/101/I.S.2/NAFS/TAS-202)					
TEST	DESCRIPTION	TEST LOCATION	TEST REPORT DATE	TEST REPORT #	Test Sealed by
ASTM E283	Air Infiltration Leakage	Architectural Testing, Inc.	07/05/2006	63326.01-301-18	Joseph A. Reed, P.E.
ASTM E331 OR ASTM 547 & TAS 202	Water Penetration	Architectural Testing, Inc.	07/05/2006	63326.01-301-18	Joseph A. Reed, P.E.
ASTM E330 & TAS 202	Uniform Static Air Press.	Architectural Testing, Inc.	07/05/2006	63326.01-301-18	Joseph A. Reed, P.E.
Supplemental Tests (Tested in accordance with TAS-201 and TAS-203)					
TEST	DESCRIPTION	TEST LOCATION	TEST REPORT DATE	TEST REPORT #	Test Sealed by
FBC 1626.2 (TAS 201 & 203)	Large Missile Impact & Cyclic	Architectural Testing, Inc.	07/05/2006	63326.01-301-18	Joseph A. Reed, P.E.
Under the limitations of the attached installation drawings, to the best of my knowledge and ability, the above product conforms to the requirements of the 2020 Florida Building Code.					
Evaluation Report Engineer:					
Jalal Farooq PE # 81223 Al-Farooq Corporation EB # 3538					
			Sealed: 1/11/2021		

no	date	description
01	09.18.17	UPDATED TO 2017 FBC
02	01.06.21	UPDATED TO 2020 FBC



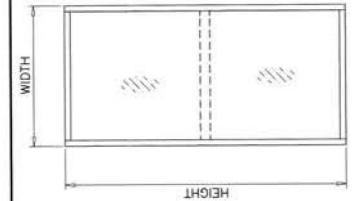
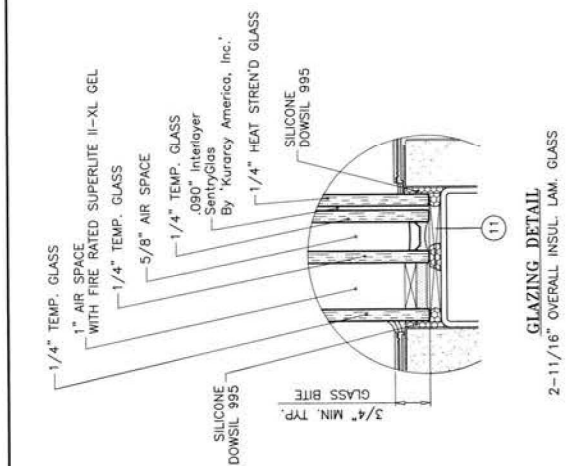
THIS SYSTEM IS RATED FOR LARGE & SMALL MISSILE IMPACT. SHUTTERS ARE NOT REQUIRED.

FL #16382

Sealed: 1/7/2021



A- CONTRACTOR TO BE RESPONSIBLE FOR THE SELECTION, PURCHASE, AND INSTALLATION OF THIS PRODUCT BASED ON THIS PRODUCT EVALUATION PROVIDED HE/SHE DOES NOT DEVIATE FROM THE CONDITIONS DETAILED ON THIS DOCUMENT.
B- THIS PRODUCT EVALUATION DOCUMENT WILL BE CONSIDERED INVALID IF ALTERED BY ANY MEANS.
C- SITE SPECIFIC PROJECTS SHALL BE PREPARED BY A FLORIDA REGISTERED ENGINEER OR ARCHITECT WHICH WILL BECOME THE ENGINEER OF RECORD (EOR) FOR THE PROJECT AND WHICH WILL BE RESPONSIBLE FOR THE DESIGN OF THE PROJECT. THE P.E.D. ENGINEER SHALL SUBMIT TO THIS LATTER THE SITE SPECIFIC DRAWINGS FOR REVIEW.
D- THIS P.E.D. SHALL BEAR THE DATE AND ORIGINAL SEAL AND SIGNATURE OF THE PROFESSIONAL ENGINEER OF RECORD THAT PREPARED IT.



FIXED WINDOW LOAD CAPACITY FOR SIZES SHOWN OR SMALLER		
WINDOW DIMS.	LOADS - PSF	
	EXT (+)	INT. (-)
24"	80.0	80.0
30"	80.0	80.0
36"	80.0	80.0
40"	80.0	80.0
48"	80.0	80.0
54"	80.0	80.0
60"	80.0	80.0
66"	80.0	80.0
72"	80.0	80.0

NOTE:
MAX. GLASS AREA OF ANY LITE NOT TO EXCEED TESTED GLASS AREA OF 31.2 SQ. FT.

GPX FIRE RATED WINDOW WALL SYSTEM

CHART ABOVE APPLIES TO SINGLE FIXED WINDOW OR SIDE BY SIDE COMBINATIONS OF FIXED/FIXED OR FIXED WITH OTHER F.B.C. APPR'D WINDOWS USING AN APPROVED MULLION IN BETWEEN.
LOWER DESIGN PRESSURE FROM WINDOWS OR MULLION APPROVAL WILL APPLY TO ENTIRE SYSTEM.
MULTIPLE LITES WITH SAFTIFIRST MULLIONS SEE CHART ON SHEET 2 FOR LIMITATIONS.

THIS SYSTEM CAN BE MATED TO GPX FIRE RATED OUTSWING DOORS CARRYING THEIR OWN APPROVAL.

THIS PRODUCT HAS BEEN DESIGNED AND TESTED TO COMPLY WITH THE REQUIREMENTS OF THE 2020 (7TH EDITION) FLORIDA BUILDING CODE INCLUDING HIGH VELOCITY HURRICANE ZONE (HVHZ).

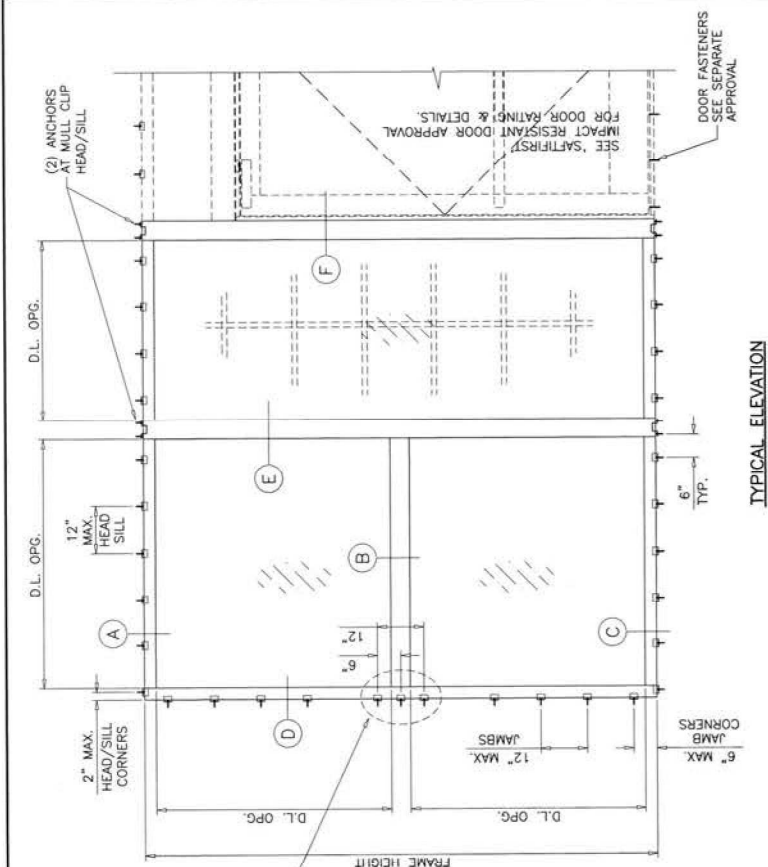
ANCHORS SHALL BE CORROSION RESISTANT, SPACED AS SHOWN ON DETAILS AND INSTALLED PER MANUF.'S INSTRUCTIONS. SPECIFIED EMBEDMENT TO BASE MATERIAL SHALL BE BEYOND WALL DRESSING OR STUCCO.

ALL SHIMS TO BE HIGH IMPACT, NON-METALLIC AND NON-COMPRESSIBLE. MATERIALS INCLUDING BUT NOT LIMITED TO STEEL/METAL SCREWS, THAT COME INTO CONTACT WITH OTHER DISSIMILAR MATERIALS SHALL MEET THE REQUIREMENTS OF THE 2020 FLORIDA BLDG. CODE & ADOPTED STANDARDS.

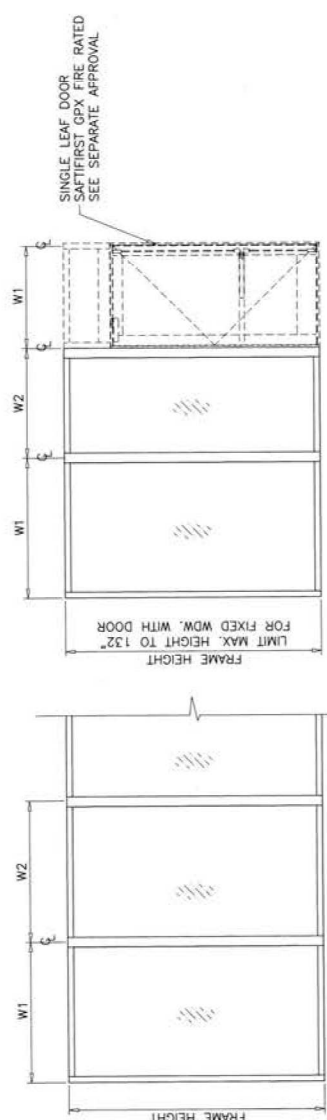
THIS PRODUCT APPROVAL IS GENERIC AND DOES NOT PROVIDE INFORMATION FOR A SITE SPECIFIC PROJECT, I.E. LIFE SAFETY OF THIS PRODUCT, ADEQUACY OF STRUCTURE RECEIVING THIS PRODUCT AND SEALING AROUND OPENING FOR WATER INFILTRATION RESISTANCE ETC.

DESIGN LOADS SHOWN ARE BASED ON 'ALLOWABLE STRESS DESIGN (ASD)'. MANUFACTURER'S LABEL SHALL BE LOCATED ON A READILY VISIBLE LOCATION IN ACCORDANCE WITH SECTION 1709.9.3.3 OF FLORIDA BUILDING CODE. LABELING TO COMPLY WITH SECTION 1709.9.2.

no	date	by	description



TYPICAL ELEVATION



Sealed: 1/7/2021



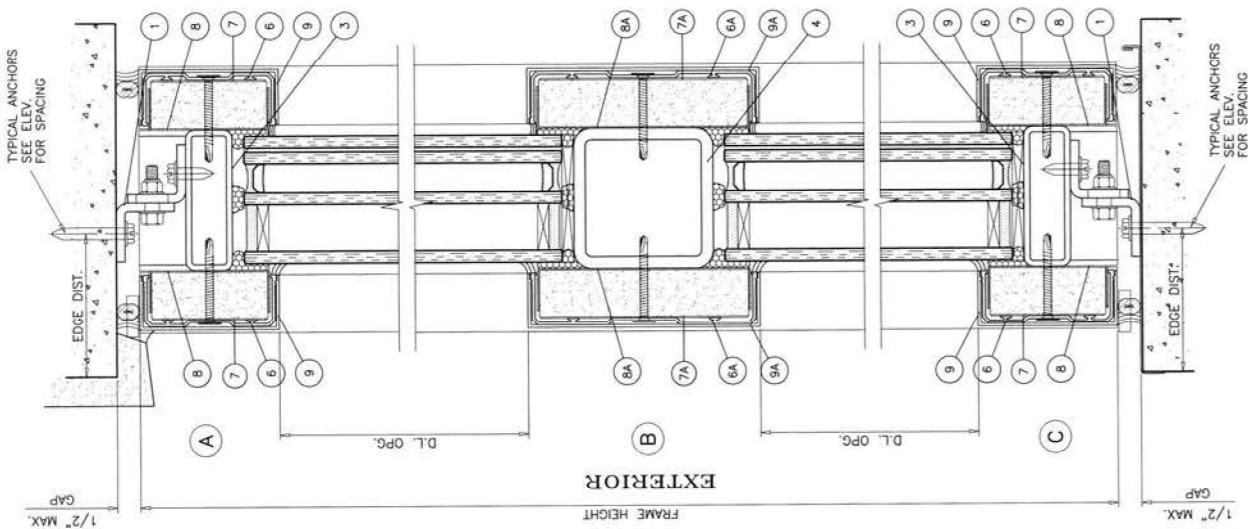
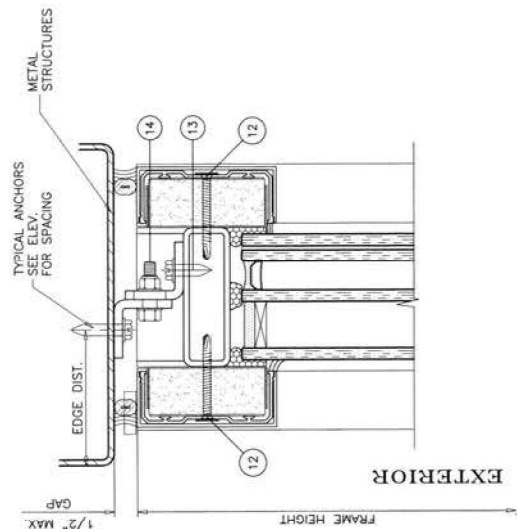
NOMINAL DIMS. WIDTH (W)	MULLION TUBE CAPACITY HEIGHT	LOADS - PSF	
		EXT.(+)	INT.(-)
24"	96"	80.0	80.0
30"		80.0	80.0
36"		80.0	80.0
40"		80.0	80.0
48"	108"	80.0	80.0
54"		80.0	80.0
60"		80.0	80.0
66"		80.0	80.0
72"	120"	80.0	80.0
78.8		78.8	78.8
72.2		72.2	72.2
80.0		80.0	80.0
30"	132"	80.0	80.0
36"		80.0	80.0
40"		80.0	80.0
48"		80.0	80.0
54"	144"	70.9	70.9
60"		64.5	64.5
66"		59.1	59.1
72"		80.0	80.0
30"		80.0	80.0
36"		80.0	80.0
40"		80.0	80.0
48"		80.0	80.0
54"		62.6	62.6
60"		56.3	56.3
66"		51.2	51.2
72"		46.9	46.9

WIDTH (W) = $\frac{W1 + W2}{2}$

AL-FAROQ CORPORATION
 ENGINEERS & PRODUCT DEVELOPMENT
 9360 SUNSET DRIVE, SUITE 220
 MIAMI, FLORIDA 33173
 (C.A.N. 3538)
 TEL. (305) 262-8100
 FAX (305) 262-6978

SAFITFIRST
 100 NORTH HILL DRIVE, SUITE 12
 BRISBANE, CA 94005-1010
 TEL. (415) 230-6740 FAX. (415) 230-6741

revisions:	no date	by description	
date:	11-10-13	scale: 3/8" = 1"	
drawn by:	TARIQ	chk. by:	
drawing no.:	W13-58	sheet	3 of 5



METAL STRUCTURES NOT BY 'SAFITFIRST'
 MUST SUPPORT LOADS IMPOSED BY GLAZING SYSTEM AND
 TRANSFER THEM TO THE BUILDING STRUCTURE.

TYPICAL ANCHORS: SEE ELEV. FOR SPACING

1/4" DIA. ULTRACON+ BY 'DEWALT' (Fu=164 KSI, Fy=148 KSI)
 DIRECTLY INTO CONCRETE OR BLOCKS
 1-1/4" MIN. EMBED INTO CONCRETE (HEAD/SILL/JAMBS)
 1-1/4" MIN. EMBED INTO BLOCKS (JAMBS)

ANCHOR EDGE DISTANCES
 INTO CONCRETE & MASONRY = 2-1/2" MIN.

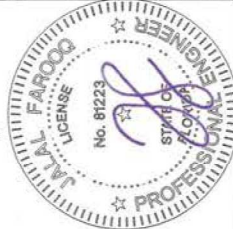
1/4" DIA. SELF DRILLING SCREWS (Fu=120 KSI, Fy=92 KSI)
 INTO METAL STRUCTURES (HEAD/SILL/JAMBS)
 (3) THREADS MIN. PENETRATION BEYOND SUBSTRATE
 ALUMINUM: 1/8" THK. MIN. (6063-T6 MIN.)
 STEEL: 1/8" THK. MIN. (Fy = 36 KSI MIN.)
 (STEEL IN CONTACT WITH ALUMINUM TO BE PLATED OR PAINTED)

ANCHOR EDGE DISTANCES
 INTO METAL STRUCTURE = 1" MIN.

SEALANTS:

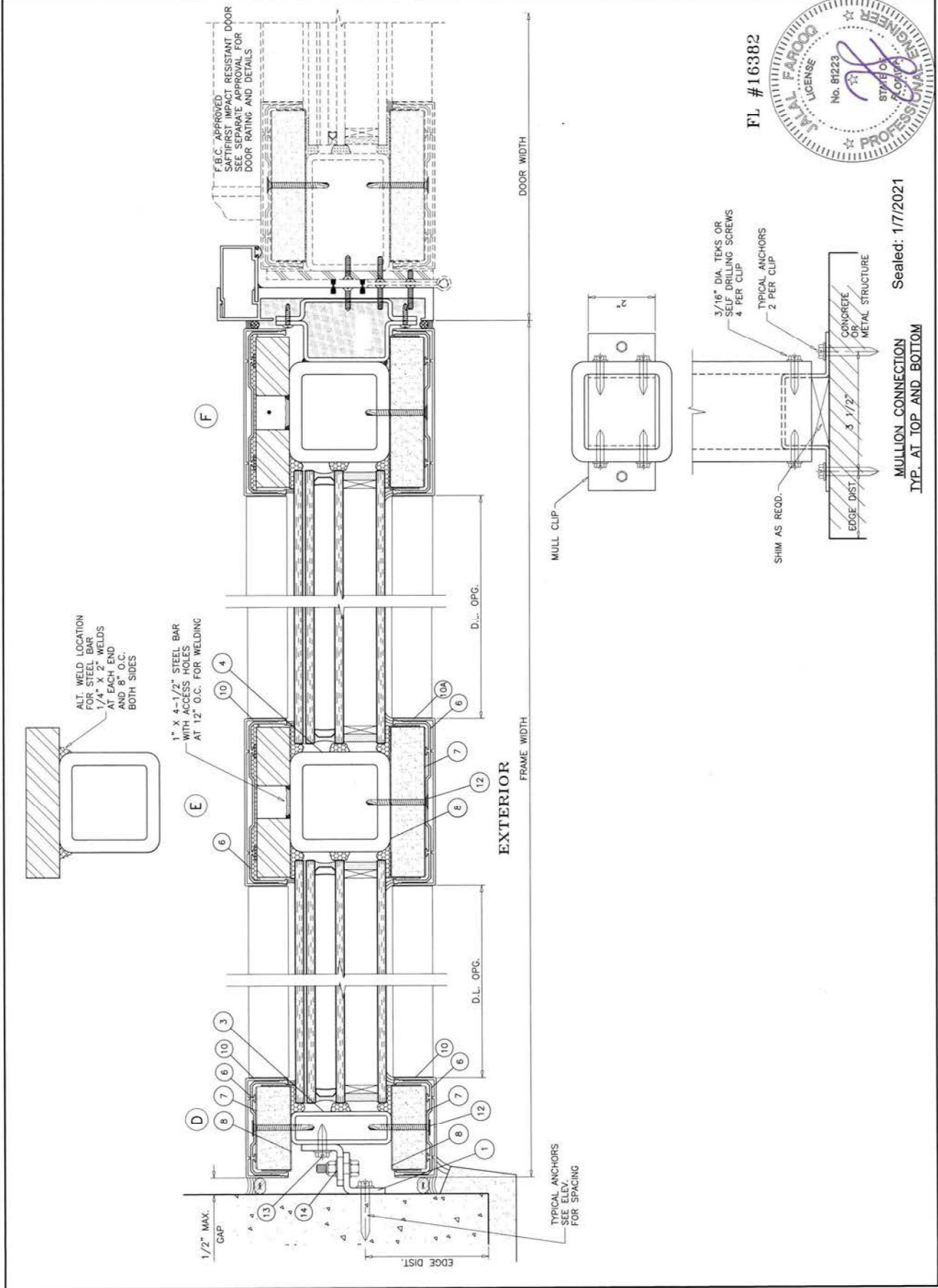
ALL FRAME CORNERS, JOINTS, MULLION SEAMS AND PERIMETER OF
 GLAZING BEAD TO FRAME SEALED WITH SILICONE SEALANT.

FL #16382



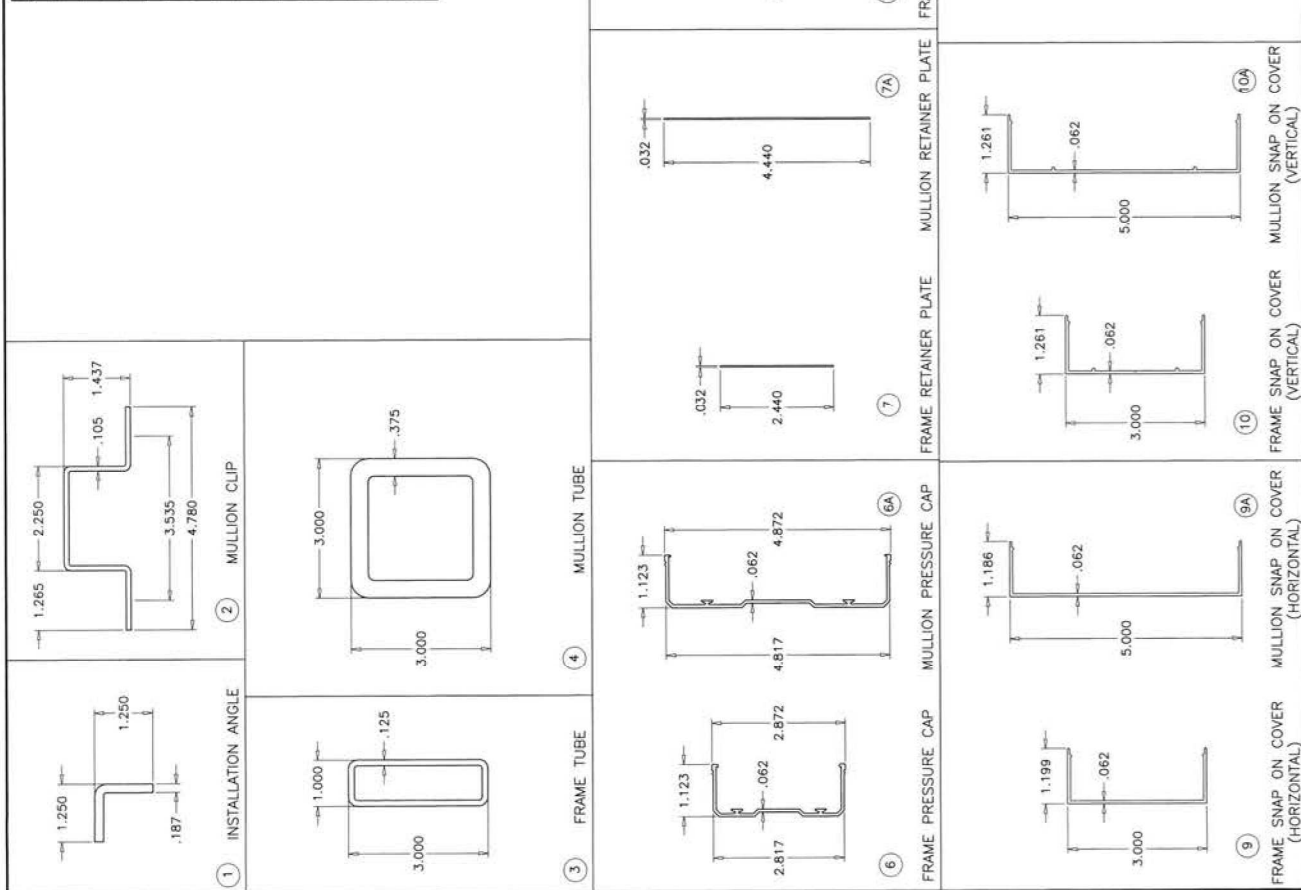
Sealed: 1/7/2021

no date	by description
revisions:	

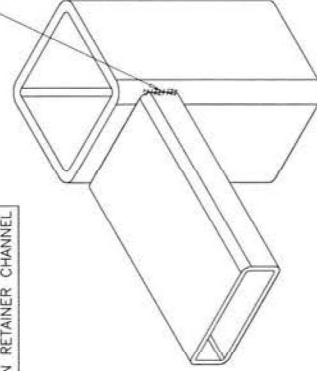


ITEM NO.	QUANTITY	DESCRIPTION	MATERIAL	MANF./SUPPLIER/REMARKS
1	AS RECD.	ANGLE CLIP, 2" LONG	A36 STEEL	A60 JET-COAT ASTM A-653
2	AS RECD.	MULLION CLIP, 2" LONG	A36 STEEL	A60 JET-COAT ASTM A-653
3	4/ WDW.	FRAME TUBE	STEEL	ASTM A-513
4	AS RECD.	MULLION TUBE	STEEL	ASTM A-513
6	8/ WDW.	FRAME PRESSURE CAP	6063-T5	-
6A	AS RECD.	MULLION PRESSURE CAP	6063-T5	-
7	8/ WDW.	FRAME RETAINER PLATE	STEEL	A60 JET-COAT ASTM A-653
7A	AS RECD.	MULLION RETAINER PLATE	STEEL	A60 JET-COAT ASTM A-653
8	8/ WDW.	FRAME RETAINER CHANNEL	STEEL	A60 JET-COAT ASTM A-653
8A	AS RECD.	MULLION RETAINER CHANNEL	STEEL	A60 JET-COAT ASTM A-653
9	8/ WDW.	FRAME SNAP ON COVER HORIZONTAL	6063-T5	-
9A	AS RECD.	MULLION SNAP ON COVER HORIZONTAL	6063-T5	-
10	8/ WDW.	FRAME SNAP ON COVER VERTICAL	6063-T5	-
10A	AS RECD.	MULLION SNAP ON COVER VERTICAL	6063-T5	-
11	2/ LITE	SETTING BLOCK, 1/4" X 1-3/8" X 3" LONG	EPDM	DURUMETER 75±5 SHORE A
12	#10 X 1-3/4"	ASSEMBLY FASTENERS AT 4" FROM ENDS & 12" O.C.	STEEL	FLAT HEAD TEKS
13	#12 X 1"	CLIP ANGLE TO FRAME FASTENER	STEEL	HH TEKS
14	1/4-20 X 1-1/4"	CLIP ANGLE TO ANGLE FASTENER	STEEL	HH BOLT W/ NUT AND WASHER

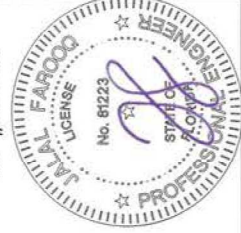
ALL WELDS PER AWS.
 ELECTRODE = ER70 MIN.



ALL VERTICAL AND HORIZONTAL
 FRAME TUBES
 TO BE JOINED WITH
 1/8" WELDS BOTH SIDES



FL #16382



Sealed: 1/7/2021